

The Big Three and Corporate Carbon Emissions Around the World

José Azar
IESE Business School & C.E.P.R.

Miguel Duro
IESE Business School

Igor Kadach
IESE Business School

Gaizka Ormazabal*
IESE Business School, C.E.P.R. & E.C.G.I

October 2020

*Corresponding author: gormazabal@iese.edu. Avenida Pearson 21, 08034 Barcelona. We thank Eloy Lanau, Christopher Nance, Vicent Peris, Sergio Ribera, and Claudia Serra for their excellent research assistance. We also thank participants at the 7th International Symposium on Environment and Energy Finance Issues, the Refinitiv seminar on recent advances in CSR research, and the 1st UZH Young Researcher Workshop on Climate Finance (University of Zurich) for helpful comments and suggestions. This paper has also benefitted from comments by Marco Ceccarelli, Madison Condon, Alon Kalay, Steven Ongena, Shiva Rajgopal, Alex Wagner, and seminar participants at Bocconi University, Columbia Business School, ESSEC Business School, and Universidad Autonoma de Barcelona. Gaizka Ormazabal thanks the “Cátedra de Dirección de Instituciones Financieras y Gobierno Corporativo del Grupo Santander”, the BBVA Foundation (2016 grant “Ayudas a Investigadores, Innovadores, y Creadores Culturales”), the Marie Curie and Ramon y Cajal Fellowships and the Spanish Ministry of Science and Innovation, grant ECO2015-63711-P. Miguel Duro acknowledges financial assistance from research project ECO2016-77579-C3-1-P funded by the Spanish Ministry of Economics, Industry, and Competitiveness.

The Big Three and Corporate Carbon Emissions Around the World

ABSTRACT

This paper examines the role of the “Big Three” (i.e., BlackRock, Vanguard, and State Street Global Advisors) on the reduction of corporate carbon emissions around the world. Using novel data on engagements of the Big Three with individual firms, we find evidence that the Big Three focus their engagement effort on large firms with high CO₂ emissions in which these investors hold a significant stake. Consistent with this engagement influence being effective, we observe a strong and robust negative association between Big Three ownership and subsequent carbon emissions among MSCI index constituents, a pattern that becomes strong in the later years of the sample period as the three institutions publicly commit to tackle ESG issues.

Keywords: Carbon emissions, Big Three, Shareholder Activism, Institutional Ownership.

JEL Classifications: M41

1. Introduction

This paper studies the role of the “Big Three” (i.e., BlackRock, Vanguard, and State Street Global Advisors) on the reduction of carbon emissions around the world. In recent years, there has been an increasing popular demand that these large investors pressure the companies in their portfolios to curb their greenhouse gas (GHG) emissions, and the leaders of the Big Three have made public statements about their intention to do so.¹ However, whether the effort of the Big Three to reduce corporate carbon emissions is meaningful and/or effective remains an open empirical question.

We study actual CO₂ emissions rather than environmental scores to measure the ultimate objective of environmental efforts more directly. This is important considering current concerns about “greenwashing” (i.e., “window dressing” actions that improve environmental scores but have little real impact on the reduction of actual emissions).²

Our analysis focuses on the Big Three to shed light on the recent debate about the role of these investors in the economy (Bebchuk and Hirst, 2019b; Coates, 2019; Fisch, Hamdani, and Davidoff Solomon, 2020). The current interest in the Big Three responds to the unique combination of characteristics of these investors. The first of these characteristics is their size; they manage an enormous (and growing) amount of investments. While widely diversified, the large monetary value of the pool of assets managed by the Big Three often results in large stakes

¹ BlackRock’s Vice-Chairman Phillip Hildebrand and Global Head of Impact Investing Deborah Winshell stated in a report by the asset manager that “[i]nvestors can no longer ignore climate change. Some may question the science behind it, but all are faced with a swelling tide of climate-related regulations and technological disruption.” (BlackRock, 2016). More recently, BlackRock CEO Larry Fink, in his 2020 annual letter, addressed CEOs and their companies stating: “[A]wareness is rapidly changing, and I believe we are on the edge of a fundamental reshaping of finance (...) Indeed, climate change is almost invariably the top issue that clients around the world raise with BlackRock. (...) In the near future – and sooner than most anticipate – there will be a significant reallocation of capital” (<https://www.blackrock.com/corporate/investor-relations/larry-fink-ceo-letter>).

² Steve Lydenberg, founder of KLD Research & Analytics Inc., acknowledged this issue in his 2002 article: “[a]lthough an increasing number of corporations publish environmental and health and safety reports, many are simply token efforts – “greenwashing” – and few address the full range of social issues necessary to assess adequately a corporation’s behavior.” Lydenberg (2002)

in their portfolio firms, which makes them likely pivotal voters.³ This gives the Big Three an influential role and facilitates their engagement with portfolio companies (Fichtner, Heemskerck, and Garcia-Bernardo, 2017; Fisch, Hamdani, and Davidoff Solomon, 2020).

The second distinctive characteristic of the Big Three is that most of the investment vehicles sponsored by these investors are passively-managed indexed funds and ETFs. While passive investors have relatively weak incentives to monitor firm-specific issues (e.g., Bebchuk and Hirst, 2019a), recent research suggests that passive investors' incentives are stronger when it comes to cross-cutting issues such as sustainability and certain aspects of corporate governance that do not require a significant investment in monitoring (see Online Appendix OA for a detailed discussion).

Beyond possible altruistic reasons, the Big Three could have several economic incentives to engage with firms on environmental issues. One potential motivation is that these large investors believe that reducing CO₂ emissions increases the value of their portfolio. As suggested by survey evidence (Krueger, Sautner, and Starks, 2020), a non-trivial number of institutional investors believe that climate risks have financial implications for their portfolio firms and that the risks have already begun to materialize, particularly regulatory risks. The validity of this concern is supported by recent empirical research on the pricing implications of climate risk.⁴

³ Bebchuk and Hirst (2019b) document that the Big Three have almost quadrupled their collective ownership stake in S&P 500 companies over the past two decades, that they have captured the overwhelming majority of the inflows into the asset management industry over the past decade, that each of them now manages 5% or more of the shares in a vast number of public companies, and that they collectively cast an average of about 25% of the votes at S&P 500 companies.

⁴ Recent literature in finance highlights the importance of climate risks for institutional investors. First, some papers provide evidence that environmental policies lower downside risk (Hoepner, Oikonomou, Sautner, Starks, and Zhou, 2019; Gibson-Brandon and Krueger, 2018). Second, institutional investors can reduce overall portfolio risk by incorporating climate criteria into their investment processes (Jagannathan, Ravikumar, and Sammon, 2018). Modern asset pricing models emphasize climate risks as a long-run risk factor (Bansal, Ochoa, and Kiku, 2017) and the importance of environmental pollution in the cross-section of stock returns (Bolton and Kacperczyk, 2019; Hsu, Li, and Tsou, 2019). Archival literature corroborates these conclusions by showing that extreme weather is reflected in stock and option market prices (Krutli, Tran, and Watugala, 2019). At the industry level, Addoum, Ng, and Ortiz-Bobea (2019) show that extreme temperatures affect earnings; Chava (2014) and El Ghouli, Guedhami, Kim, and

The Big Three could also push firms to reduce CO₂ emissions to attract or retain investment clients that are sensitive towards environmental concerns. This alternative motivation is supported by prior literature (e.g., Ariely, Bracha, and Meier, 2009), which argues that pro-social behavior has several sources: (i) altruism, (ii) direct financial incentives, (iii) building social image (Lacetera and Macis, 2010), and (iv) social pressure (DellaVigna, List, and Malmendier, 2012). Given the recent proliferation of socially responsible investing, being perceived as environmentally conscious could help the Big Three to attract investors' money.

To empirically analyze the potential effect of the Big Three on corporate carbon emissions around the world, we use two novel datasets. We obtain carbon emission data for a wide cross-section of firms between 2005 and 2018. We complement these data with information on Big Three engagements with individual firms, which we hand-collect from recent public disclosures of these fund sponsors. Our data indicate that, on average, these large funds engage annually with a number of firms (for example, from 7/1/2018 to 6/30/2019 BlackRock held personal meetings with directors and executives of 1,458 firms). When we explore the determinants of the probability of such engagements, we find corroborating evidence that firms with higher CO₂ emissions are more likely to be the target of Big Three engagements. We also find that the Big Three focus their engagements on large firms (i.e., firms with a potentially larger effect on global carbon emissions) and on firms in which these large investors have a more substantial stake (i.e., firms in which the Big Three are more influential).

Next, we explore whether Big Three engagements are followed by a reduction in CO₂ emissions. We start by testing whether there is an association between Big Three ownership in a given firm and that firm's CO₂ emissions. We find a negative and significant association.

Park (2018) show that firms can lower their cost of capital and increase value by improving their environmental policies; and Ginglinger and Moreau (2019) show that greater climate risk leads to lower firm leverage.

Tellingly, we observe that this association is more pronounced when the firm is more likely to be engaged by the Big Three. Consistent with an increasing popular demand that these large investors pressure the companies in their portfolios to curb emissions, the pattern is stronger in the later years of the sample period. Critically, the association becomes stronger as each of the three institutions increases its commitment to deal with environmental issues.

To further sharpen identification, we exploit the yearly reconstitution of the indexes Russell 1000 and Russell 2000. For companies that are around the 1000/2000 cutoff, the final assignment to the index is relatively random, and the inclusion in the Russell 2000 index likely increases Big Three ownership (a number of funds sponsored by the Big Three track the Russell indexes). We find that the changes in Big Three ownership driven by the inclusion in this index are followed by lower subsequent CO₂ emissions.

Our paper contributes to the burgeoning literature on climate risk. One strand of this literature studies the effect of climate risk on firm value. For example, Bansal et al. (2017) study climate risk as a long-run risk factor and Bolton and Kacperczyk (2019) and Hsu et al. (2019) study climate risk in the cross-section of stock returns. In contrast with the view that environmental issues are too remote and uncertain to have a meaningful economic effect, this literature generally finds substantial price and real effects of climate risk. That said, these papers also find evidence of mispricing and behavioral responses to environmental concerns.

Other recent studies examine whether and how institutions react to climate risk. Some of these papers provide empirical evidence that investors take into account climate risk considerations in their investment portfolio decisions (e.g., Hoepner, Oikonomou, Sautner, Starks, and Zhou, 2019; Gibson-Brandon and Krueger, 2018).⁵ However, the evidence on how

⁵ Hoepner et al. (2019) and Gibson-Brandon and Krueger (2018) show that better environmental policies are related to lower downside and overall portfolio risk. In a similar spirit, Jagannathan et al. (2018) show that investors can

institutional investors engage with their portfolio companies on climate-risk matters is relatively scant. The available evidence is limited to studies using data from a single fund (Dimson, Karakas, and Li, 2015; 2018) and survey data (e.g., McCahery, Sautner, and Starks, 2016; Krueger et al., 2020). Similar to our paper, Dyck, Lins, Roth, and Wagner (2019) use a wide international sample of firms and find a positive association between institutional ownership and corporate environmental scores (measured by ASSET4 E&G scores). Our study differs from this literature in that we analyze the role of the Big Three (rather than that of institutional ownership in general) on CO₂ emissions (rather than on environmental scores).⁶ These are important distinctions; the Big Three have unique characteristics and play an important –yet controversial– role in the economy, and environmental scores could reflect “greenwashing” rather than actual environmental improvements.

This paper also adds to the nascent literature on large indexers. The spectacular growth of the volume of assets of these institutions in recent years has spurred a debate on the role of the Big Three in the economy (e.g., Bebchuk and Hirst, 2019b; Coates, 2019; Fisch et al., 2020). While acknowledging the advantages of index fund investing in terms of diversification and lower management fees, recent academic work has raised some concerns about the Big Three, including anti-competitive effects and concerns related to pricing efficiency and trading behavior.⁷ More related to our research question, Bebchuk and Hirst (2019a) argue that index funds underinvest in stewardship and defer excessively to the preferences and positions of

reduce portfolio risk by incorporating climate criteria into their investment processes and Ramelli, Wagner, Zeckhauser, and Ziegler (2018) provide evidence that investors react to political events related to firms’ climate strategies.

⁶ Two other recent papers empirically analyze the Big Three. Bebchuk and Hirst (2019b) provide descriptive evidence of the growth of these institutions during recent years. Fichtner et al. (2017) analyze proxy vote records and find that the Big Three utilize coordinated voting strategies, and hence follow a centralized corporate governance strategy, which generally consists in voting with management.

⁷ For concerns about anticompetitive behavior, see Azar, Kagy, and Schmalz (2016); Azar, Schmalz and Tecu (2018), and Anton, Ederer, Gine, and Schmalz (2018), among others. For concerns about pricing and trading see Coates (2019).

corporate managers.⁸ We add to this important debate by studying a dimension of high social relevance: the reduction of carbon emissions. This dimension of the debate is not without controversy; for example, the fact that the Big Three have provided relatively little voting support to shareholder proposals related to climate issues is sometimes interpreted as evidence that these investors do not contribute to the global effort to reduce corporate carbon emissions (see Online Appendix OB for a detailed discussion).

The evidence in this paper should also be relevant for those who view GHG emissions as a market failure (Stern, 2008). Since a full-scale regulatory solution to the emissions externality problem faces severe coordination frictions across countries, corporate governance is regarded as an alternative way of addressing climate change.⁹ In particular, large diversified institutions are increasingly viewed as catalysts in driving firms to reduce their carbon emissions (Andersson, Bolton, and Samama, 2016; OECD, 2017).

The remainder of the paper is organized as follows. In section 2, we develop the hypothesis that the Big Three can induce firms to reduce carbon emissions. In section 3, we describe the sample construction and measurement choices. In section 4, we analyze engagements of the Big Three with firms. Results on the association between the Big Three and carbon emissions are discussed in section 5. In section 6, we conduct additional tests. Section 7 contains the conclusions of the paper.

⁸ In Online Appendix OA we analyze other research that suggests that the net benefit from monitoring could be greater than initially thought, and provide specific considerations in the context of the Big Three.

⁹ The most common type of regulatory solutions is to put a price on carbon, either through Pigouvian taxes or through a cap-and-trade system (Nordhaus, 1977; Stern, 2008). To implement these regulations at the necessary scale, governments would need to overcome significant political obstacles, due to the fact that climate change is a collective action problem that requires global cooperation (Nordhaus, 2010; Stavins, 2011). Global cooperation is challenging because countries would need to appoint an external party that would determine actions, monitor behavior, and impose sanctions (Ostrom, 2010).

2. Hypothesis development

2.1. *Big Three's incentives to reduce carbon emissions*

Corporate externalities such as CO₂ emissions are commonly viewed as societal costs that are caused by corporations but not internalized by firms' shareholders and managers. Under this view, shareholders (and managers) would have no incentive to reduce corporate externalities.

However, it is plausible that large and diversified asset managers – unlike undiversified ones – internalize at least some of the costs from CO₂ emissions, and therefore would benefit from a reduction in CO₂ emissions across portfolio firms. Theoretically, this idea is supported by early models showing that diversified shareholders could internalize some externalities from their portfolio companies (e.g., Hansen and Lott, 1996; Hartford, 1997). These externalities potentially include both direct damages to firm assets from climate change, and more indirect costs such as social stigma and the risk that public environmental concerns trigger regulation. In the case of the effect of CO₂ emissions on the value of indexers' portfolios, this possibility is supported by recent literature showing that climate change can affect firm valuations (Brinkman, Hoffman, and Oppenheim, 2008). Thus, to the extent that large indexers hold stable portfolios of a large number of corporate securities, if corporate emissions contribute significantly to climate-related systematic risk, reducing carbon emissions can make large indexers better off.¹⁰

Recent survey evidence on investors' attitude towards climate risk provides support for the idea that investors believe that reducing carbon emissions pays off. For example, based on a survey of a large number of investment managers, Krueger et al. (2020) conclude that institutional investors believe that climate risks have financial implications for their portfolio firms and that the risks have already begun to materialize.

¹⁰ Notice that these institutions' direct financial incentives to promote value-increasing strategies can be quite high in spite of the low percentage fees (because of the large dollar value of their investments).

Even if index managers did not believe that climate risk alone has a substantial impact on portfolio value, the Big Three could push for a reduction of CO₂ emissions to attract or retain investment clients that are sensitive towards environmental concerns. Lack of response to the social demand that the Big Three play a role in the reduction of carbon emissions could result in outflows from the Big Three to asset managers perceived to be more socially and environmentally responsible. Indeed, recent evidence suggests that investors value sustainability beyond pecuniary motives (e.g., Riedl and Smeets, 2017; Hartzmark and Sussman, 2019), and that mutual funds compete for climate-conscious investment flows (Ceccarelli, Ramelli, and Wagner, 2020).

The incentives of the Big Three to reduce CO₂ emissions could be called into question on the grounds that most of the investment vehicles sponsored by the Big Three are passively-managed, and passive investors have relatively weak incentives to invest in firm-specific monitoring (Bebchuk and Hirst, 2019a). This concern is seemingly supported by the relatively modest number of Big Three employees exclusively focused on stewardship. We offer some considerations in this regard. To begin, there is an ongoing debate about the impact of index investors and several recent papers suggest that the net benefit from monitoring could be greater than suggested by the previous criticisms (e.g., Appel et al., 2016; McCahery, Sautner, and Starks, 2016; Fisch et al., 2020). Moreover, according to a recent report by Morningstar, the top active fund families have even smaller stewardship teams, report fewer private engagements, and exhibit voting behavior similar to that of the Big Three (Morningstar, 2017). Recent research also suggests that passive investors have meaningful incentives to monitor cross-cutting issues such as sustainability and certain aspects of corporate governance, as monitoring these issues requires relatively less firm-specific research (i.e., it is less costly) than monitoring mergers and

acquisitions or board membership. Finally, the stewardship team is larger than it might seem at first sight, as this team works in conjunction with thousands of fund managers around the world. A significant number of these investment professionals are in charge of active funds and thus can provide valuable feedback on portfolio firms (see Online Appendix OA for a more detailed discussion on the monitoring costs and benefits of the Big Three).¹¹

2.2. How can the influence of the Big Three result in lower CO₂ emissions?

Shareholders usually influence firm behavior through three mechanisms: selling (or not buying) the stock, exercising voting rights, and engaging with management and voicing their concerns. While index funds usually do not “vote with their feet” (they hold the stock of the company as long as the firm is included in the index tracked by the fund), large indexers can be highly influential on corporate decision-making.¹² The reason is that these large institutions often hold a substantial percent of the shares of their portfolio companies and thus can be pivotal voters in control contests, activist campaigns, and mergers (Coates, 2019). Moreover, the support of the Big Three can be important in director elections.¹³ To the extent that these situations are

¹¹ The Big Three offer a large number of actively managed funds. For example, 27% of Blackrock’s Assets Under Management (i.e., USD 2 trillion) is in actively managed funds (Blackrock, 2019a), which makes BlackRock one of the largest active asset managers on the market. To facilitate coordination among fund managers and the Investment Stewardship Team, Blackrock has built a proprietary database, Aladdin® Research, where employees introduce the key points from any engagement with portfolio companies (Blackrock, 2020). Blackrock refers to this notion of cooperation on firm monitoring as “stewardship ecosystem” (Blackrock, 2020).

¹² In the third Quarter Earnings Release in 2019 BlackRock states: “Of the assets we manage, 50% are equity assets, and of these, 92% are index and 8% active. The index assets closely track market indexes created by others, which means whether we like a company or not –including its management, its strategy, its products –we will still hold it in these portfolios. This is quite different than actively managed portfolios that can express displeasure by ‘voting with their feet’ and selling the stock. Given this long-term perspective, our investment stewardship activities are focused on maximizing long-term shareholder value.” (see https://ir.blackrock.com/files/doc_news/archive/4a1e3da1-e31d-4295-a0e8-96eed78aeef2.pdf)

¹³ While directors usually obtain a large majority of votes, losses in voting support undermine directors’ professional standing and induce directors to take corrective actions (see Cai, Garner, and Walkling, 2009, and Fischer, Gramlich, Miller, and White, 2009). In particular, top managers and directors could lose investors’ voting support if they fail to address environmental concerns. For example, in his 2020 letter, Larry Fink, CEO of BlackRock states: “[W]e will be increasingly disposed to vote against management and board directors when companies are not making sufficient progress on sustainability-related disclosures and the business practices and plans underlying them.”

relatively common, disregarding explicit requests from the Big Three can be costly for firm managers and directors.

The Big Three could also exert influence over managers without explicit engagements. By making public statements, the Big Three can communicate their preferences to thousands of portfolio companies without having to engage with each company's management individually. For example, Blackrock often sends letters to each of the most carbon-intensive companies in their portfolio asking them to disclose climate risks (BlackRock, 2018). Firms' managers and/or directors could respond to such public demands to obtain the support of Big Three in key voting items. For example, according to Condon (2020), at Exxon's 2017 annual meeting the company's largest shareholder, BlackRock, voted against the re-election of two board members in protest of a "non-engagement" policy that precluded directors from talking to shareholders about the company's strategic response to climate change. Following the vote, Exxon reconsidered its opposition to climate risk disclosure and permitted directors to meet with shareholders going forward.

Furthermore, the Big Three can indirectly induce a reduction in CO₂ emissions by promoting governance structures that make firms more responsive to investors (e.g. Gordon and Pound, 1993; Carleton, Nelson, and Weisbach, 1998; Appel et al., 2016). These governance structures could make corporate managers more responsive to the recent demands of all investors (not just the Big Three) to take climate risks seriously.

While reducing carbon emissions is usually costly, firms could curb emissions through relatively efficient and non-disruptive product and process improvements. In particular, companies could rebalance their product mix based on their carbon emissions and/or reduce the amount of input materials (for example, Starbucks recently introduced a strawless cold drink lid).

In addition, firms could improve their logistics to reduce transportation-related emissions, switch energy sources (for example, by moving to cleaner sources of energy such as natural gas and wind), and/or implement CO₂ capture and storage technologies (for example, Chevron uses such technologies to capture the emissions they flare when converting the natural gas to LNG). Finally, firms could improve end-user energy efficiency (for example, by building weathering, turning down heating, using LED light bulbs, and reducing redundant trips).

3. Data, sample and measurement

3.1 Data and sample construction

Our initial sample includes the universe of public firms covered by Trucost (a commercial provider of corporate carbon emission data) in the period between 2005 and 2018.¹⁴ Trucost is a widely used source of firm carbon emission data for the corporate sector (for example, MSCI and S&P use Trucost data in their indexes) and for international organizations such as UNEP FI (i.e., the United Nations Environment Program Finance Initiative). Trucost covers a wide cross-section of firms around the world (since 2005, this vendor has typically covered an average of 5,046 firms per year, which represent approximately 80% of global market capitalization). Trucost collects carbon emission data from publicly available sources. When a covered firm does not publicly disclose its carbon emissions, Trucost estimates a firm's annual carbon emissions based on an environmental profiling model. Appendix B provides a description of the process followed by Trucost to assess corporate carbon emissions and an example of the computation of a firm's total CO₂ emissions.

Several sample countries have introduced regulations that enhance the reliability of the emissions reported by firms to Trucost, either by mandating strict guidelines and/or by

¹⁴ Carbon emission data are rarely available before 2005. The Carbon Disclosure Project (CDP) launched the first climate change survey in 2006, thus enabling companies to provide standardized disclosure of emission information.

recommending independent verification of the reported emissions.¹⁵ Corroborating the reliability of these data, prior research documents a correlation of 0.99 among the direct CO₂ emissions reported by five providers, namely CDP, Trucost, MSCI, Sustainalytics, and Thomson Reuters (Bolton and Kacperczyk, 2019).

We obtain data on institutional ownership from the FactSet/LionShares database. FactSet/LionShares gathers institutional ownership for U.S. equities from mandatory filings with the SEC. For stocks traded outside the U. S., FactSet/LionShares gathers institutional ownership data from national regulatory agencies and stock exchange announcements, as well as direct disclosures of mutual funds, mutual fund industry directories, and company proxies and annual reports. We obtain accounting and market data from Compustat Global and Datastream/WorldScope. These datasets provide stock price, balance sheet, and income statement information for a large number of international firms.

Table 1 outlines the sample selection procedure. As shown in Table 1, we depart from 55,118 firm-year observations in the Trucost dataset. To be included in the sample, we require non-missing institutional ownership and financial data. We also require the firm to be incorporated in one of the 24 countries covered by the MSCI World Index.¹⁶ The resulting sample consists of 42,193 firm-year observations, 19,224 observations corresponding to constituents of the MSCI World Index and 22,969 observations corresponding to firms that are not included in this index.

¹⁵ For example, the “Grenelle de l’environnement” in France was addressed to all companies with over 500 employees in 2013. The French regulation states that a company’s report must be subject to verification by an independent third party (appointed by the executive director or chief executive), which must be accredited by COFRAC (French Committee of accreditation) or by any other accreditation body signatory to the multilateral recognition agreement established by the European coordination of accreditation bodies. In the U.K., the reporting of direct and certain indirect emissions has been mandated from 2013, although verification is not mandatory.

¹⁶ To mitigate the distorting effects of outliers, we also exclude observations with extreme regression diagnostics (studentized residuals exceeding 2.5). This outlier screen removes 0.8% of the available firm-years in MSCI subsample and 1% of the available firm-years in non-MSCI subsample.

3.2 Measurement choices and descriptive statistics

To measure a firm's annual carbon emissions, we define $\text{Log}(CO_2)$ as the logarithm of the firm's annual GHG emission measured in equivalents of metric tons of CO_2 . The variable measuring Big Three ownership, Big3_Hldg , is defined for each firm-year as the fraction of the firm's equity held by the Big Three in that year. For each firm-year, we compute Big Three ownership at the parent level, that is, we aggregate the holdings of all mutual funds of BlackRock, Vanguard, and State Street Global Advisors in that firm-year. Most of the Big Three's investments in our sample firms are held in "index" funds (out of the average of 4.8% of shares owned by the Big Three in the MSCI firms, 4% are owned by index funds managed by the Big Three). The rest of the funds owned by the Big Three are predominantly growth funds.¹⁷ NonBig3_Hldg is the fraction of the firm's equity held by institutional investors other than the Big Three.

Our tests include a vector of firm-level control variables, Controls , defined as follows. Size is the logarithm of total assets. We include this variable to control for the volume of the firm's business activity as well as for potential public pressure over its environmental impact. $\text{Log}(BM)$ is the logarithm of the book-to-market ratio (book value of equity divided by market value of equity). We include this variable to control for the firm's growth opportunities. We also include a measure of past performance, ROA , defined as net income scaled by total assets. Leverage is computed as the sum of the long-term debt and the debt in current liabilities over firm's total assets. PPE is the ratio of property, plant, and equipment over firm's total assets. We include these two variables to measure credit constraints; more leveraged firms have to cope with regular cash outflows, which may preclude financing of environmentally beneficial investments.

¹⁷ Among the funds managed by the Big Three, 71% are index funds, 22% implement some form of growth strategy (e.g., aggressive growth, growth at accessible price or "GARP"), and only 7% are value funds.

Conversely, pledgeable assets support more borrowings, which in turn allow for further investment in pledgeable assets. All continuous control variables are winsorized at the 1 and 99 percentiles to mitigate the effect of outliers. Standard errors are double-clustered at the firm and year level (see Appendix OD, section OD.2, for robustness to alternative clustering options).

Table 2 presents descriptive statistics for the variables used in our main tests. As shown in Table 2, the average ownership by the Big Three among MSCI firms is 4.8%, with a standard deviation of 4% and a 75th percentile of 7%. This suggests that the Big Three have substantial voting power in a number of companies around the world (Fichtner et al., 2017). Total institutional ownership (i.e., the sum of *Big3_Hldg* and *NonBig3_Hldg*) is 45% on average, a value that is in line with prior studies on institutional ownership around the world (Bena, Ferreira, Matos, and Pires, 2017). Table 2 also shows that our sample includes a wide variety of firms in terms of size, leverage, and profitability (Panel A), as well as country of origin and industry affiliation (Panels B and C).

4. Engagements of the Big Three with portfolio firms

To gauge whether the Big Three can induce companies to reduce carbon emissions, we start by analyzing these large investors' engagements with the firms in their portfolios. The Big Three have recently started to disclose comparable detailed data on private engagements with their portfolio firms in investment stewardship reports (ISR).¹⁸

According to the narrative in the ISRs, most engagements go beyond sending a letter to the firm. For example, BlackRock's ISR states that the fund's investment stewardship

¹⁸ Before 2018, the disclosure of engagement data was scarce and different across the three institutions. For example, BlackRock limited its disclosure of engagements to summary statistics aggregated by region. In 2015, for instance, BlackRock reported that the fund conducted 90 direct engagements with its portfolio companies on environmental issues, but the identity of the companies engaged was not revealed (see 2015 Responsible Investment Report <https://www.blackrock.com/corporate/literature/whitepaper/blk-cgri-2015-annual-vande-statistics-report.pdf>).

department had “substantive dialogue with the companies listed as engaged firms.” The ISR also states that the fund “engages companies for the following reasons: (1) to ensure that BlackRock can make well-informed voting decisions; (2) to explain its voting and governance guidelines; (3) to convey its thinking on long-term value creation and sound governance practices.”

We manually collect engagement information from the most recent ISRs published by the Big Three. We disregard engagements by letters and include only comprehensive engagements via calls and in-person meetings. The length of the period covered by the ISR exhibits some variation across the three investors. BlackRock’s 2019 ISR includes engagements from 7/1/2018 to 6/30/2019. Vanguard’s 2019 ISR includes engagements from 7/1/2018 to 12/31/2018. State Street’s 2019 ISR includes engagements from 1/1/2018 to 12/31/2018. Vanguard and State Street classify engagements into broad categories according to the reasons for the engagements. BlackRock simply publishes a list of firms contacted for comprehensive engagement.

We first analyze the descriptive statistics of these data. In absolute terms, we observe that, during the period covered by the ISR reports, the Big Three engage with a relatively large number of firms; BlackRock engaged with 1,458 firms, State Street engaged with 686 firms, and Vanguard engaged with 356 firms. In relative terms, however, the Big Three appear to engage with a relatively small percentage of their portfolio firms: BlackRock, State Street, and Vanguard engage with 9%, 5%, and 3% of their portfolio firms, respectively. The Big Three engage much more often with firms included in MSCI World Index than with firms not included in that index; 48% (15%) of MSCI (non-MSCI) firms were targeted by the Big Three in 2018. In absolute terms, the number of engagements is also substantially higher among MSCI firms than among non-MSCI firms (625 and 275, respectively). Thus, the Big Three appear to focus their engagement efforts on the largest public firms in each country (the MSCI World Index aims to

cover 85% of total market capitalization in 24 developed countries). The focus on large firms is consistent with these firms being more influential (more visible) and having a potentially stronger effect on climate change.¹⁹

Next, we conduct a multivariate test on the determinants of the probability that a given firm is engaged by each of the Big Three. For each of the Big Three, we construct the left-hand-side variable as an indicator that equals one if the firm is included in the list of engagements disclosed in 2019 ISR of one of the Big Three institutions, and zero otherwise (we refer to these institution-specific variables as *Engagement_Blackrock*, *Engagement_StateStreet*, and *Engagement_Vanguard*, respectively).²⁰ We construct these variables for the cross-section of our sample firms as of the start of 2018 (i.e., the firms in the Trucost universe that meet the data requirements described in section 3).

The right-hand-side variables are defined as follows. *Log(CO₂)* is the logarithm of GHG emissions, as previously defined. *Big3_Hldg* is the fraction of the firm's shares held by funds managed by BlackRock, Vanguard, or State Street. The specification also includes a vector of controls for firm characteristics: *Size*, *Log(BM)*, *ROA*, *Leverage*, and *PPE*, all of them as previously defined (see section 3 and Appendix A for variable definitions). We also include an indicator for whether the firm is a MSCI constituent (*MSCI_Constituent*).

Table 3 presents the results of estimating logit and OLS regressions for each of the Big Three based on the variables described above. The results reveal that the probability of Big Three

¹⁹ Large firms emit the largest portion of corporate emissions. For example, in 2017 the aggregate level of total CO₂ emissions for our sample of U.S. MSCI firms is 3,698 million metric tons of CO₂ equivalent, which is around 70% of the total U.S. CO₂ emissions (<https://www.epa.gov/ghgemissions/inventory-us-greenhouse-gas-emissions-and-sinks-fast-facts>). The U.S. accounts for approximately 15% of the worldwide emissions.

²⁰ The classification of engagements across the Big Three is not homogeneous. Vanguard includes engagements on environmental issues in the “oversight of strategy and risks” category. State Street includes engagements on environmental issues in the “Environmental/Social” category. While Blackrock does not classify engagements into categories, environmental issues are commonly included in the agenda of Blackrock’s engagements with portfolio companies (e.g., BlackRock, 2019b).

engagement is higher if the target firm exhibits higher levels of carbon emissions in the previous year (the coefficient on $\text{Log}(CO_2)$ is consistently positive and statistically significant). Table 3 also shows that, in general, the Big Three are more likely to engage with firms in which they are more influential (the coefficients on the three institutions' ownership share are generally positive and statistically significant). The association of the probability of engagement with *Size* and *MSCI_Constituent* is often positive and strong, which confirms that the Big Three focus their engagement efforts on MSCI constituents. In Online Appendix OD.1, we conduct a placebo test by constructing the dependent variables in Table 3 using engagements that are *not* related to environmental issues. The coefficient on $\text{Log}(CO_2)$ is no longer significant.

5. Carbon emissions and Big Three shareholdings

The previous results indicate that the Big Three selectively engage with a number of firms in their portfolio companies on environmental issues. We next explore whether higher ownership by these large investors is followed by lower levels of carbon emissions.

To study the relationship between Big Three ownership and corporate carbon emissions, we estimate the following model:

$$\text{Log}(CO_2)_{it} = \alpha + \beta * \text{Big3_Hldg}_{it-1} + \gamma * \text{NonBig3_Hldg}_{it-1} + \Phi * \text{Controls}_{it-1} + \tau_t + \delta_i + \varepsilon_{it} \quad (1)$$

where *Big3_Hldg*, *NonBig3_Hldg*, and *Controls* are as previously defined (see section 3 and Appendix A for variable definitions). Sub-indexes *i* and *t* refer to firm *i* and year *t*, respectively. All these independent variables are measured at the end of the prior year to avoid simultaneity bias. τ_t and δ_i denote year and firm-fixed effects, respectively. When estimating this model, we distinguish between constituents of the MSCI World Index and other firms, as our results from tests of the probability of engagement (see Table 3) suggest that the Big Three focus their monitoring efforts on environmental issues in MSCI constituents.

Table 4 presents the results of this test. For the subsample of MSCI firms (i.e., columns 1-3), the coefficient on *Big3_Hldg* is negative and statistically significant, which is consistent with the notion that ownership by the Big Three is associated with a subsequent decrease in CO₂ emissions. The negative association is robust to including year-, industry-, country-, and firm-fixed effects.²¹ That is, the association holds both in the cross-section and in the time-series and thus is unlikely to be confounded either by time-invariant country and industry characteristics or by the potential effect of the volume of economic activity on overall levels of CO₂ emissions. In contrast with this result, the coefficient on *NonBig3_Hldg* is not statistically significant, suggesting that institutional ownership is generally not associated with a decrease in carbon emissions.

Figure 1 analyzes whether the association between Big Three ownership and carbon emissions is concentrated in cases where Big Three increases to the point of holding a significant stake in a given company, namely in cases where the Big Three are likely to be more influential. In the analysis of Figure 1, we re-estimate equation (1) replacing *Big3_Hldg* with separate indicator variables, each marking a 1% interval of *Big3_Hldg* values. That is, the first indicator variable equals one if $Big3_Hldg \in [0\%, 1\%]$ and zero otherwise, the second indicator variable equals one if $Big3_Hldg \in (1\%, 2\%]$ and zero otherwise, the third indicator variable equals one if $Big3_Hldg \in (2\%, 3\%]$ and zero otherwise, and so forth. The last indicator variable equals one if $Big3_Hldg > 10\%$ and zero otherwise. We define the $[0\%, 1\%]$ interval as baseline, and thus we exclude the indicator variable for $Big3_Hldg \in [0\%, 1\%]$. As shown in Figure 1, the association between Big Three ownership and CO₂ emissions becomes significant when the ownership of these investors crosses the 3-4% ownership threshold. This evidence is consistent with our

²¹ We define industry affiliations using Fama-French 38 industry portfolios (https://mba.tuck.dartmouth.edu/pages/faculty/ken.french/Data_Library/det_38_ind_port.html).

conjecture that firms respond to the Big Three's requests to reduce emissions only when these investors can be pivotal in key voting items.

In addition, we offer three considerations that might help understand how the Big Three can influence firms even though these institutions usually do not hold majority stakes. First, while the Big Three might start acquiring a modest stake in a given company, this stake is likely to increase in the future (among other things, because the total volume of money invested in the mutual funds managed by these institutions is growing significantly).²² Second, the Big Three's position on environmental matters could have spillovers on other institutional investors. For example, it is possible that some passive investors that do not have the resources to monitor governance matters follow the Big Three's policies. Moreover, some environmental activists could feel encouraged to put pressure on the firm if they observe that the Big Three are willing to support efforts to reduce emissions. Consistent with this, Appel et al. (2019a) provide evidence that large institutional investors are crucial for the success of hedge fund activism. Third, the influence of the Big Three could go beyond the holdings of the mutual funds sponsored by these institutions. For example, large institutions often hold corporate debt and indirectly own corporate shares through investment vehicles included in their family of investment companies (e.g., pension funds, and active funds, including even hedge funds). As such, our measure of Big Three ownership is a lower bound estimate of the total amount of claims owned directly or indirectly by these institutions (a total amount that is not possible to measure across countries

²² Bebchuk and Hirst (2019a) estimate the total inflows to the Big Three from 2009 to 2018 to be more than \$3 trillion, which represent 82% of the inflows to all active and passive funds over that period. As a result, they estimate that the Big Three could cast as much as 40% of the votes in S&P 500 companies within two decades. Indeed, in August of 2019, U.S. equity index-fund assets officially surpassed their actively managed counterparts for the first time, reaching \$4.27 trillion in total assets under management (Griffin, 2020).

due to lack of available data).²³ Taken together, these considerations suggest that the percentage ownership of the Big Three in a company is likely to be a lower bound estimate of the influence of these institutions in the firm.

Table 5 presents a variant of the analysis in Table 4 in which we focus on changes rather than levels of Big Three ownership. In Table 5, Panel A, we replace *Big3_Hldg* with *Big3_Increase*, an indicator variable that equals one if $\Delta_Big3_Hldg > 1\%$. This variable identifies cases in which Big Three ownership increases meaningfully. Consistent with *Big3_Increase* identifying cases with relatively high Big Three influence, the mean of *Big3_Hldg* conditional on *Big3_Increase*=1 is 8%. Consistent with Table 4, Table 5, Panel A, shows that the coefficient on *Big3_Increase* is consistently negative and significant across specifications.

As an alternative specification, Table 5, Panels B analyzes the association between changes in CO₂ emissions and changes in Big Three ownership for MSCI. The dependent variable is $\Delta_CO_2(t-s, t)$, defined as the fractional change of CO₂ emissions from year $t-s$ to year t , i.e., $(CO_{2t} - CO_{2t-s})/CO_{2t-s}$ ($s=1, \dots, 12$). In parallel to Panel A, the experimental variable is $\Delta_Big3_Hldg(t-s-1, t-1)$, defined as the change in *Big3_Hldg* from year $t-s-1$ to year $t-1$. For consistency with the previous test, we also include $\Delta_NonBig3_Hldg(t-s-1, t-1)$, defined as the change in *NonBig3_Hldg* from year $t-s-1$ to year $t-1$. The results of Table 5, Panel B, show that changes in Big Three ownership are negatively associated with subsequent changes in carbon emissions for MSCI firms. Panel B also highlights that, while part of the reduction in emissions is already observable in the subsequent year, the reduction also extends to subsequent periods

²³ Nonetheless, we also note that these other investment companies related to the Big Three act independently in ESG matters as their investment strategy may differ from that of the mutual funds sponsored by the corresponding investment family.

(for example, firms might require more than one year to implement changes or the changes might require some time to become effective).

To delve into the sources of our results, in Table 6 we decompose *Big3_Hldg* into the holdings of each of the three institutions: *Blackrock_Hldg*, *StateStreet_Hldg*, and *Vanguard_Hldg*. We also decompose *NonBig3_Hldg* in three ways. First, we split *NonBig3_Hldg* into *NonBig3_Large* (defined as the fraction of the firm's equity held by the largest 100 institutions other than the Big Three) and *NonBig3_Small* (defined as the difference between *NonBig3_Hldg* and *NonBig3_Large*). Second, we split *NonBig3_Hldg* into *NonBig3_Index* (defined as the fraction of the firm's equity held by indexers other than the Big Three) and *NonBig3_NonIndex* (defined as the difference between *NonBig3_Hldg* and *NonBig3_Index*).²⁴ Third, we split *NonBig3_Hldg* into *NonBig3_LT* (defined as the fraction of the firm's equity held by long-term investors other than the Big Three) and *NonBig3_ST* (defined as the difference between *NonBig3_Hldg* and *NonBig3_LT*).²⁵

As shown in Table 6, the negative association between Big Three ownership and CO₂ emissions is driven by Blackrock and State Street.²⁶ Table 6 also reveals that there is a negative association between CO₂ emissions and non-Big Three funds with similar characteristics: index-

²⁴ To identify index funds we use the variable "style" provided by FactSet. However, the investment style variable is available only for 48% of funds in our sample; therefore, we augment the investment style classification by using fund names. In particular, we take the list of 88 common index benchmarks from Cremers, Ferreira, Matos, and Starks (2016) and label as indexers all funds that refer in their names to one of these benchmarks.

²⁵ Following Gaspar, Massa, and Matos (2005) we use the variable "investor turnover", a measure of the investment horizon of institutions, to classify institutions as either long or short term. The rationale behind this measure is that an investor is classified as short-term if it reshuffles its overall portfolio frequently. Alternatively, an investor is classified as long-term if it holds its portfolio positions unchanged for a long time. Following Gaspar, Massa, Matos, Patgiri, and Rehman (2013) we classify institutions with time averaged turnover rates in the bottom 33rd percentile as long-term investors.

²⁶ According to the data of Appendix C, Vanguard is the latest of the Big Three in increasing significantly its commitment to environmental issues. In terms of the values of the commitment index constructed based on these data, Vanguard is also the institution with the lowest values. These patterns provide a potential explanation for the results in Table 6. That said, we do find a negative and significant coefficient on *Vanguard_Hldg* when we remove firm fixed effects from the specification (untabulated), suggesting that Vanguard also contributes (although perhaps to a lower degree) to the reduction of emissions.

tracking, long-term, and large. That said, Table 6 also suggests that these associations are substantially lower than that between CO₂ emissions and Big Three ownership.

Tables 4, 5, and 6 also present results for the subsample of non-constituents of the MSCI World Index. While in Table 4 the coefficient on *Big3_Hldg* is not statistically significant for non-constituents of the MSCI, Table 4 shows a consistently positive coefficient on *NonBig3_Hldg*. We offer two considerations to interpret this result. First, this positive association is not statistically significant in the parallel tests of Table 5. Second, Table 6 reveals that, in contrast to the results in the MSCI subsample, the positive association between CO₂ emissions and non-Big Three funds in the non-MSCI subsample is driven by funds that are *not* index-tracking, are *not* long-term, and are *not* large. As such, one possible interpretation of the positive coefficient on *NonBig3_Hldg* for the non-MSCI subsample is that there is an increase in CO₂ emissions preceded by activist investors pressuring for short-term performance.

Gauging whether the potential effect of the Big Three is large enough to meaningfully contribute to the worldwide objective of reducing carbon emissions is an extremely ambitious task that exceeds the scope of this paper. With this caveat in mind, we provide some guidance to interpret our results. In Table 4, the magnitude of the coefficient on *Big3_Hldg* ranges from -3.44 to -1.00 , depending on the specification. A coefficient of -1.00 suggests that a one standard deviation increase in *Big3_Hldg* in a given firm is associated with a reduction of approximately 2% in corporate CO₂ emissions (the within-firm standard deviation of *Big3_Hldg* is 2.11%). Similarly, the magnitude of the coefficient on *Big3_Increase* in Column (3) of Table 5 is close to -0.02 , which also suggests a decrease of approximately 2% in corporate CO₂ emissions. A 2% decrease is a sizable effect when compared to current emission reduction goals proposed by environmental initiatives. For instance, the objective of the Regional Greenhouse

Gas Initiative is to reduce emission cap by 2.5% each year from 2015 to 2020 (i.e., 12.5% in five years).²⁷ While among smaller, non-MSCI firms the potential effect of the Big Three on corporate CO₂ emissions appears to be insignificant, MSCI firms account for a large portion of the market capitalization and a large part of the corporate CO₂ emissions. In our sample, the 16% of the firms included in the MSCI World Index account for 56% of the total CO₂ emissions (these data correspond to 2018, the most recent year in our sample period).

Nonetheless, some studies on climate change call for higher magnitudes to stop global warming; according to a recent study commissioned by the United Nations, the global volume of GHG emissions needs to drop by 55% by 2030 (i.e., around 5% each year) to limit global warming to 1.5 degrees.²⁸ Moreover, an additional consideration is important for interpreting the magnitude of our results; the estimated effect based on our results (i.e., 2%) corresponds to the *within-firm* standard deviation of *Big3_Hldg*, suggesting that we should not expect a 2% decrease in emissions across the board every year.

6. Sharpening identification

An obvious concern about our previous tests is that firms could reduce carbon emissions for reasons correlated with the ownership of the Big Three in the company. To the extent that our previous results are robust to controlling for time-invariant cross-sectional variation (our models include firm fixed effects), our inferences cannot be confounded by an omitted variable unless this variable co-varies with our key variables not only in the cross-section, but also in the time-series. Nonetheless, we conduct several tests to sharpen identification.

²⁷ The Regional Greenhouse Gas Initiative (RGGI) founded in January 2007 is a state-level emissions capping and trading program carried out by nine northeastern U.S. states (<https://www.rggi.org/>).

²⁸ www.fastcompany.com/90272330/global-emissions-must-drop-55-by-2030-to-meet-climate-goals

6.1. Additional fixed effects

Table 7 presents the results of repeating the analysis in Table 4 and Table 5 (Panel A) for the MSCI sample using a more restrictive fixed effect structure. In particular, we include country-by-year, industry-by-year, size-decile-by-year, and country-by-industry-by-year fixed effects. As shown in Table 7, our inferences are not sensitive to including these additional fixed effects; the coefficients on *Big3_Hldg* and *Big3_Increase* remain negative and significant across all models. Finally, Table 7 also includes a specification excluding the vector *Controls*. The results show that our inferences do not hinge on any of the control variables.

6.2. Cross-sectional variation in Big Three engagement

We next explore cross-sectional variation in the results in Table 4. If these results are related to Big Three influence, we expect the pattern in Table 4 to be more pronounced among firms with a higher probability of being the target of Big Three engagement. As such, this test links the analyses in Table 3 (i.e., the determinants of the probability that the Big Three engage with the firm) and Table 4 (i.e., the association between Big Three holdings and carbon emissions).

In particular, we repeat the analysis in Table 4 including the interaction between *Big3_Hldg* and *Big3_Target*, an indicator variable for firms with relatively higher probability of being the target of Big Three engagements. Specifically, *Big3_Target* equals one if all three probabilities of engagement corresponding to each of the Big Three as predicted by the analysis in Table 3 are in the top quintile of the sample distribution, and zero otherwise.²⁹ We use the probability of engagement by each institution rather than data on actual engagements because comparable engagement data are only available for all three institutions in the last year of our

²⁹ Specifically, we estimate the probability of engagement of Blackrock, State Street, and Vanguard using models (2), (5), and (8) in Table 3. We then code *Big3_Target* for a given firm as one if the three estimated values are in the top quintile of the corresponding distributions of these three values for the sample firms.

sample period. For completeness, we estimate two variants of this analysis redefining *Big3_Target* as an indicator for whether all three estimated probabilities of engagements are in the top quartile and in the top tercile of the distribution, respectively.

As shown in Table 8, the interaction between *Big3_Hldg* and *Big3_Target* is negative and significant. The magnitude of the coefficient is larger when *Big3_Target* is defined based on higher percentiles of the sample distribution. These results are consistent with the association between the Big Three and carbon emissions being more pronounced when these large funds engage with the firms' management on environmental issues. In Online Appendix OD.3 we repeat the analysis in Table 8 using an alternative measure of Big Three's engagement that does not rely on the specification in Table 3. Our inferences remain.

6.3. Time variation in Big Three engagement

We analyze whether the association between Big Three ownership and carbon emissions has evolved over time. Figure 2 shows results of estimating equation (1) by year; we plot the coefficient on *Big3_Hldg* estimated in annual cross-sectional regressions and the corresponding confidence intervals. The analysis reveals that the association between Big Three ownership and CO₂ emissions has increased substantially over time. In fact, the association appears to be significant only in the most recent years. This evidence is consistent with an increasing popular demand after the 2015 Paris Agreement that these large investors pressure the companies in their portfolios to curb their greenhouse gas emissions, as illustrated by recent public statements by climate activists and top executives of the Big Three.

We next explore whether this pattern is driven by a recent increase in the Big Three's commitment to deal with environmental issues. We measure the commitment of each of the three institutions to improve firms' environmental practices by constructing an index based on seven

items corresponding to three categories: i) engagement with the firms, ii) voting behavior, and iii) public statements. The data on each of these items is presented in Appendix C. We define the index in a straightforward way; we construct indicator variables based on the items in Appendix C and add up these indicator variables. For items 1, 4, and 6 we construct an indicator variable that equals one if the values are higher than a given threshold (see Appendix C for details). We label *Blackrock_Commitment*, *StateStreet_Commitment*, and *Vanguard_Commitment* the corresponding indexes for Blackrock, State Street, and Vanguard, respectively. We then regress total CO₂ emissions on the interaction between the previous three variables with *Blackrock_Target*, *StateStreet_Target*, and *Vanguard_Target*, defined as indicator variables for whether the probability of engagement (as predicted by the analysis in Table 3) for, respectively, Blackrock, State Street, and Vanguard is in the top quintile over the sample period. As shown in Table 9, Panel A, these interactions are negative and significant, which suggests that the increase in the Big Three' commitment to deal with environmental issues during recent years is associated with a decrease in CO₂ emissions.

As an alternative, corroborating analysis, we exploit the fact that *Blackrock_Commitment*, *StateStreet_Commitment*, and *Vanguard_Commitment* increase substantially in specific years: 2017 for Blackrock, 2014 for State Street, and 2018 for Vanguard.³⁰ As shown in Appendix C (shadowed in grey), in these years the corresponding

³⁰ There is anecdotal evidence associated with the data in Appendix C corroborating that these were years of change. For example, in 2017 Blackrock states for the first time that the environment is an engagement priority. In that same year, Blackrock's Corporate Governance and Responsible Investment team grows 50% (compared to only 10% over the period 2011-2016). Consistently, we observe that this institution engages with more firms on environmental issues starting in year 2017. That same year, Blackrock issues a significantly higher number of press releases covering environmental issues. Critically, early in 2017, Larry Fink made strong and unprecedented public statements on Blackrock's commitment to ESG issues (<https://www.reuters.com/article/us-blackrock-climate-exclusive/exclusive-blackrock-vows-new-pressure-on-climate-board-diversity-idUSKBN16K0CR>), and in May 2017 supported the ExxonMobil climate-related shareholder proposal. In sum, the data suggests that the year 2017 was a turning point in terms of Blackrock's efforts to induce firms to improve their environmental practices. Similarly, we observe that State Street's interest towards environmental issues increases significantly in 2014

index increases by 50% and reaches a value equal or higher than 4. We then focus the analysis for each of the three institutions within the two-year window around the corresponding change and test whether CO₂ emissions decrease among the firms with higher probability of being targeted by that institution. As shown in Table 9, Panel B, the interactions between *Blackrock_Target*, *StateStreet_Target*, and *Vanguard_Target* with the corresponding indicators for the years after the change (*Post_2017*, *Post_2014*, and *Post_2018*) are negative and significant. These results are also in line with the notion that the increase in the Big Three' commitment to deal with environmental issues is associated with a decrease in CO₂ emissions. In Online Appendix OD.4 we repeat the analysis in Table 9 using an alternative measure of Big Three's commitment to deal with environmental issues and an alternative measure of the probability of Big Three's engagement. Our inferences remain.

6.4. Plausibly exogenous variation in Big Three ownership

We further sharpen identification by exploiting the reconstitution of the Russell 1000/2000 Indexes as a source of exogenous variation in Big Three ownership. Following prior literature (e.g., Appel, Gormley, and Keim, 2019a and others), we exploit the yearly reconstitution of the indexes Russell 1000 and Russell 2000.³¹ Every year, these indexes are formed based on end-of-May market capitalizations; the largest 1,000 companies constitute the Russell 1000 (i.e., firms #1–1,000), while the next 2,000 firms in size are included in the Russell 2000 Index (i.e., firms #1,001–3,000). For companies that are around the 1000/2000 cutoff, the final assignment to the index is relatively random in the sense that it can be determined by

(<https://newsroom.statestreet.com/press-release/corporate/state-streets-corporate-responsibility-report-highlights-philanthropy-volunt>), and that of Vanguard in 2018 (<https://www.ft.com/content/5dbd7d56-1256-11e8-940e-08320fc2a277>).

³¹ This approach has been widely used in the recent finance literature to assess the effect of passive investors on shareholder activism (Appel, Gormley, and Keim, 2019a), firms' corporate governance choices (Appel et al., 2016), payout policy (Crane, Michenaud, and Weston, 2016), CEO power and composition of board of directors (Schmidt and Fahlenbrach, 2017), and firm transparency and information production (Boone and White, 2015).

random variations in market value. Because the firm-specific weight in the index is value-weighted (as a function of float-adjusted market capitalization as of the end of June), the position at the top of Russell 2000 Index rather than at the bottom of Russell 1000 Index results in a significant increase in the company's weight in the index, which triggers stock purchases by index funds tracking the indexes. Therefore, for each dollar invested in a passive fund using the Russell 1000 as a benchmark, very little of that dollar will be invested in stocks at the bottom of that index; while for each dollar invested in a passive fund using the Russell 2000 as a benchmark, a large proportion of that dollar will be invested in stocks at the top of the index. To the extent that the Big Three invest heavily in funds tracking the Russell indexes, the shift from Russell 1000 to Russell 2000 likely increases Big Three ownership in the firm.³²

Our specification follows the recommendations of recent methodological papers studying the use of the Russell index assignment as a source of exogenous variation in firms' ownership structures (Appel, Gormley, and Keim, 2019b; Glossner, 2018; Wei and Young, 2019; Ben-David, Franzoni, and Moussawi, 2019). Following Appel et al. (2019a), we conduct a 2SLS (2-stage least squares) IV (instrumental variable) estimation including the bottom-500 stocks of the Russell 1000 and top-500 stocks of the Russell 2000.³³

³² Appel et al. (2019a) show that ownership by passively managed mutual funds and exchange traded funds (ETFs) is about 40% higher, on average, for stocks at the top of the Russell 2000 Index relative to otherwise similar stocks at the bottom of the Russell 1000 Index. Additionally, Appel et al. (2016) report that, on average, the ownership stakes of the three biggest passive investors are a third higher among firms at the top of the Russell 2000, and each of these three institutions' likelihood of owning more than 5% of a firm's shares increases by two-thirds on average, while their likelihood of being a top five shareholder is higher, on average, by 15%.

³³ Prior literature also uses a regression discontinuity (RD) approach around the Russell 1000/2000 reconstitution. The literature offers three variants of this RD approach (see Appel, Gormley, and Keim, 2019b): i) Sharp regression discontinuity using end-of-May market cap rankings, ii) Sharp regression discontinuity using June float-adjusted Russell rankings, and iii) Fuzzy regression discontinuity (i.e., a 2-step procedure using an indicator that equals one for firms with a Rank greater than 1,000). Appel, Gormley, and Keim (2019b) point out two important limitations of the RD approach. First, it is not possible to use the sharp RD approach for sample years after 2006 (focusing on the pre-2006 period would limit the power of our test, as our sample starts in 2005). Second, the RD approach does not provide a direct way to quantify the effect of firms' ownership structure on firm outcomes because the first stage of the fuzzy RD approach does not include a measure of institutional ownership. To overcome these difficulties, Appel,

$$\text{First stage: } \text{Big3_Hldg}_{it} = \alpha + \beta * \text{Russell2000}_{it} + \sum \lambda_n * (\ln(\text{Mktcap}_{it}))^n + v * \ln(\text{Float}_{it}) + \phi_1 * \text{Band}_{it} + \phi_2 * \text{Russell2000}_{it-1} + \phi_3 * \text{Band}_{it} * \text{Russell2000}_{it-1} + \tau_t + \delta_i + \varepsilon_i \quad (2)$$

$$\text{Second stage: } \text{Log}(\text{CO}_2)_{it+1} = \alpha + \beta * \widehat{\text{Big3_Hldg}}_{it} + \sum \lambda_n * (\ln(\text{Mktcap}_{it}))^n + v * \ln(\text{Float}_{it}) + \phi_1 * \text{Band}_{it} + \phi_2 * \text{Russell2000}_{it-1} + \phi_3 * \text{Band}_{it} * \text{Russell2000}_{it-1} + \tau_t + \delta_i + \varepsilon_i \quad (3)$$

Russell2000_{it} , the instrumental variable, is defined as an indicator equal to one if stock i is assigned to the Russell 2000 Index in year t . Mktcap_{it} is the market capitalization of stock i as of the end of May of year t computed following Ben-David et al.'s (2019) methodology to approximate the ranking variable used by Russell to assign stocks to indexes.³⁴ Float_{it} is the float-adjusted market capitalization of stock i as of the end of June of year t used by Russell to determine firm-specific index weights (Russell resorts stocks within indexes using float-adjusted market capitalization measured at the end of June). Band_{it} equals one if the firm's end-of-May market capitalization is within the banding interval, and zero otherwise.³⁵ $\text{Russell2000}_{it-1}$ equals one if the firm is in Russell 2000 in the previous reconstitution year, and zero otherwise. Finally, the specification also includes firm and year fixed effects. We repeat the analysis using three alternative bandwidths; we estimate equations (2) and (3) including the 500, 400, and 300 bottom/top stocks of the Russell 1000/2000. To account for the possibility that the effect of being

Gormley, and Keim (2019b) recommend an alternative approach, namely the 2SLS IV. We follow their recommendation.

³⁴ A common theme in the papers discussing the validity of the Russell 1000/2000 reconstitution as identification strategy is that the end-of-May market capitalization ranking used by Russell to determine firms' index assignment at reconstitution is not observable to the econometrician (Appel et al., 2019b; Glossner, 2018; Wei and Young, 2019; Ben-David et al., 2019). As such, the literature uses a variety of approaches to approximate this ranking, notably computing end-of-May market capitalization based on CRSP. In a recent paper, Ben-David et al. (2019) develop a procedure that predicts assignment to the Russell 1000/2000 with significant improvements relative to previous approaches.

³⁵ In 2007, to curb the number of stocks changing indexes, Russell adjusted the index switching rules by introducing a banding policy. Under this policy, to switch from Russell 1000 to Russell 2000, a stock has to fall below not only the 1,000-cutoff point, but also the lower threshold of the aforementioned banding range (see Online Appendix OC for more details on Russell's index assignment procedure).

included in the index on *Big3_Hldg* is not linear, we include polynomial controls with degree (N) 1, 2, and 3 for the firms' market capitalization.³⁶

Table 10, Panel A, reports results of the first-stage estimations. *Russell2000* loads with positive and highly significant coefficients in all specifications, suggesting that the aggregate ownership by the Big Three is almost one percentage point higher for firms in the top of Russell 2000 Index than for the other firms around the cutoff.³⁷ Table 10, Panel B, reports the results of the second stage estimation. The coefficient on *Big Three* is generally negative and significant. Compared to the average of the estimated coefficients in Table 4, the magnitude of the coefficient on Big Three ownership in Table 10 is larger. The estimated coefficient on $\widehat{Big3_Hldg}_{it}$ (which ranges from -5.34 to -6.86) suggests that a 1% increase in Big Three ownership (which is close to its within-firm standard deviation) is associated with a reduction of CO2 emissions of around 7%.³⁸

7. Conclusion

This paper examines the role of the Big Three (i.e., BlackRock, Vanguard, and State Street Global Advisors) on the reduction of corporate carbon emissions around the world. Using

³⁶ We repeat the analysis replacing *Big3_Hldg* with *NonBig3_Hldg*. To the extent that index investing is more prevalent among the Big Three than among other investment companies, this additional analysis is a placebo test. As shown in Online Appendix OD, section OD.5, in this placebo test we do not find significant results in either of the two stages of the estimation.

³⁷ The strong association between *Big3_Hldg* and *Russell2000* suggests that the “relevance condition” of the instrumental variable (IV) approach is satisfied. The value of the Kleibergen-Paap F-statistic is greater than 12, which further alleviates the concern that the instrument is “weak” (uncorrelated with the endogenous regressor).

³⁸ Given the local nature of the Russell 1000/2000 experiment we warn about generalizing the magnitudes of this test to the full sample. The fact that the magnitude of the coefficient on $\widehat{Big3_Hldg}_{it}$ is larger than that in Table 4 is consistent with the results of similar tests in prior literature (e.g., Ben David et al., 2018). The difference can be due to several reasons. First, Big Three ownership is higher among US firms than among non-US firms (the average Big Three ownership in the firms included in the Russell 1000/2000 test is 12%). Second, the firms included in the Russell 1000/2000 test are not the largest ones (the largest firms are far away from the switching threshold). This could result in a more pronounced reduction in CO₂ emissions to the extent that the Big Three are more influential among smaller firms (smaller firms cannot afford upsetting large investors because these firms have more limited financing opportunities). Third, admittedly the difference in the magnitude of the coefficients between Table 4 and Table 10 could be partly driven by estimation error; a negative omitted variable bias in the OLS estimation or distortions in the second-stage estimation induced by inaccuracies in the first stage.

novel data on engagements of the Big Three with individual firms, we find evidence that these engagements are related to CO₂ emissions, and that the Big Three focus their engagement efforts on large firms in which they hold a significant stake. We also find that higher ownership by the Big Three is followed by lower carbon emissions. This pattern is stronger when the firm is more likely to be the target of Big Three engagements and especially so in later years of the sample period as the Big Three increase their commitment to deal with environmental issues.

Overall, our results are consistent with the notion that firms under the influence of the Big Three are more likely to reduce corporate carbon emissions. Our evidence is particularly relevant considering that large investment institutions are increasingly viewed as catalysts in driving firms to reduce their carbon emissions (Andersson et al., 2016; OECD, 2017).

The interpretation of our results is subject to at least three caveats. First, while suggestive, our evidence is not enough to demonstrate a causal effect of Big Three influence on corporate CO₂ emissions. Further research is needed to establish such a causal link. Second, our results do not speak to whether the reduction in CO₂ emissions associated with Big Three ownership increases shareholder wealth. Third, our tests do not necessarily imply that the level of monitoring provided by the Big Three is (net) socially optimal. We look forward to future research shedding further light on these important issues.

References

- Addoum, J. M., Ng, D. T., Ortiz-Bobea, A., 2019. Temperature shocks and industry earnings news. Working paper.
- Andersson, M., Bolton, P., Samma, F., 2016. Governance and climate change: A success story in mobilizing investor support for corporate responses to climate change. *Journal of Applied Corporate Finance* 28, 29–33.
- Anton, M., Ederer, F., Gine, M., Schmalz, M. C., 2018. Common ownership, competition and top management incentives. Working paper. European Corporate Governance Institute.
- Appel, I., Gormley, T., Keim, D., 2016. Passive investors, not passive owners. *Journal of Financial Economics* 121, 111–141.
- Appel, I., Gormley, T., Keim, D., 2019a. Standing on the shoulders of giants: the effect of passive investors on activism. *Review of Financial Studies* 22, 111–141.
- Appel, I., Gormley, T., Keim, D., 2019b. Identification using Russell 1000/2000 Index assignments: A discussion of methodologies. Working paper.
- Ariely, D., Bracha, A., Meier, S., 2009. Doing good or doing well? Image motivation and monetary incentives in behaving prosocially. *American Economic Review* 99, 544–555.
- Azar, J., Kagy, J. F., Schmalz, M. C., 2016. Can changes in the cost of carry explain the dynamics of corporate cash holdings? *Review of Financial Studies* 29, 2194–2240.
- Azar, J., Schmalz, M. C., Tecu, I., 2018. Anticompetitive effects of common ownership. *Journal of Finance* 73, 1513–1565.
- Bansal, R., Ochoa, M., Kiku, D., 2017. Climate change and growth risk. NBER Working Paper 23009.
- Bebchuk, L. A., Hirst, S., 2019a. Index funds and the future of corporate governance: theory, evidence, and policy. Working paper.
- Bebchuk, L. A., Hirst, S., 2019b. The specter of the giant three. *Boston University Law Review* 99, 721–741.
- Ben-David, I., Franzoni, F., and Moussawi, R., 2018. Do ETFs increase volatility? *The Journal of Finance* 73, 2471–2535.
- Ben-David, I., Franzoni, F., Moussawi, R., 2019. A note to “do ETFs increase volatility?": An improved method to predict assignment of stocks into Russell indexes. *Journal of Finance (Replications and Corrigenda)* (web-only: <https://afajof.org/comments-and-rejoinders/>).

- Bena, J., Ferreira, M., Matos, P., Pires, P., 2017. Are foreign investors locusts? The long-term effects of foreign institutional ownership. *Journal of Financial Economics* 126, 122–146.
- BlackRock, 2016. Adapting portfolios to climate change. Implications and strategies for all investors. BlackRock Investment Institute.
- BlackRock, 2018. How BlackRock investment stewardship engages on climate risk. BlackRock Investment Institute.
- BlackRock, 2019a. 2019 annual report.
- BlackRock, 2019b. 2019 Investment stewardship annual report. BlackRock Investment Institute.
- BlackRock, 2020. BlackRock investment stewardship. Protecting our clients assets for the long term. BlackRock Investment Institute.
- Bolton, P., Kacperczyk, M., 2019. Do investors care about carbon risk? Working paper.
- Boone, A., White, J. 2015. The effect of institutional ownership on firm transparency and information production. *Journal of Financial Economics* 117, 508–533.
- Brinkman, M. W., Hoffman, N., Oppenheim, J. M., 2008. How climate change could affect corporate valuations. *McKinsey Quarterly* 29, 1–7.
- Carleton, W.T., Nelson, J.M., Weisbach, M.S., 1998. The influence of institutions on corporate governance through private negotiations: Evidence from TIAA- CREF. *Journal of Finance* 53, 1335–1362.
- Cai, J., Garner, J., Walkling, R., 2009. Electing directors. *Journal of Finance* 64, 2389–2421
- Ceccarelli, M., Ramelli, S., Wagner, A., 2020. Low-carbon mutual funds. Working paper.
- Chava, S., 2014. Environmental externalities and cost of capital. *Management Science* 60, 2223–2247.
- Coates, J. C., 2019. The future of corporate governance part I: the problem of twelve. Working paper.
- Condon, M., 2020. Externalities and the common owner. *Washington Law Review* 95, 1–81.
- Crane, A. D., Michenaud, S., Weston, J., 2016. The effect of institutional ownership on payout policy: Evidence from index thresholds. *Review of Financial Studies* 29, 1377–1408.
- Cremers, M., Ferreira, M., Matos, P., Starks, L., 2016. Indexing and active fund management: International evidence. *Journal of Financial Economics* 120, 539–60.

- DellaVigna, S., List, J., Malmendier, U., 2012. Testing for altruism and social pressure in charitable giving. *Quarterly Journal of Economics* 127, 1–56.
- Dimson, E., Karakas, O., Li, X., 2015. Active ownership. *Review of Financial Studies* 28, 3225–3268.
- Dimson, E., Karakas, O., Li, X., 2018. Coordinated engagements. Working paper.
- Dyck, A., Lins, K., Roth, L., Wagner, H., 2019. Do institutional investors drive corporate social responsibilities? International evidence. *Journal of Financial Economics* 131, 693–714.
- El Ghoul, S., Guedhami, O., Kim, H., Park, K., 2018. Corporate environmental responsibility and the cost of capital: International evidence. *Journal of Business Ethics* 149, 335–361.
- Fichtner, J., Heemskerk, E. M., Garcia-Bernardo, J., 2017. Hidden power of the Big Three? Passive index fund, re-concentration of corporate ownership, and new financial risk. *Business and Politics* 19, 298–326.
- Fisch, J., Hamdani, A., Davidoff Solomon, S., 2020. The new titans of Wall Street: A theoretical framework for passive investors. *University of Pennsylvania Law Review* 168, 17–72.
- Fischer, P., Gramlich, J., Miller, B., White, H., 2009. Investor perceptions of board performance: Evidence from uncontested director elections. *Journal of Accounting and Economics* 48, 172–189.
- Gaspar, J., Massa, M., Matos, P., 2005. Shareholder investment horizons and the market for corporate control. *Journal of Financial Economics* 76, 135–65.
- Gaspar, J., Massa, M., Matos, P., Patgiri, R., Rehman, Z., 2013. Payout policy choices and shareholder investment horizons. *Review of Finance* 17, 261–320.
- Gibson-Brandon, R., Krueger, P., 2018. The sustainability footprint of institutional investors. Working paper. Swiss Finance Institute Research Paper (17-05).
- Ginglinger, E., Moreau, Q., 2019. Climate risk and capital structure. Working paper.
- Glossner, S. 2018. The effects of institutional investors on firm outcomes: Empirical pitfalls of quasi-experiments using Russell 1000/2000 Index reconstitutions. Working Paper.
- Gordon, L., Pound, J., 1993. Information, ownership structure, and shareholder voting: Evidence from shareholder-sponsored corporate governance proposals. *Journal of Finance* 48, 697–718.
- Griffin, C., 2020. Margins: Estimating the Influence of the Big Three on Shareholder Proposals. *SMU Law Review*, Forthcoming.

- Hansen, R. G., Lott, J. R., 1996. Externalities and corporate objectives in a world diversified shareholder/consumers. *Journal of Financial and Quantitative Analysis* 31, 43–68.
- Hartford, J., 1997. Firm ownership patterns and motives for voluntary pollution control. *Managerial and Decision Economics*, 18, 421–431.
- Hartzmark, S., Sussman, A., 2019. Do investors value sustainability? A natural experiment examining ranking and fund flows. *Journal of Finance* 74, 2789– 2837.
- Hoepner, A.G., Oikonomou, I., Sautner, Z., Starks, L.T., Zhou, X., 2019. ESG shareholder engagement and downside risk. Working paper.
- Hsu, P., Li, K., Tsou, C., 2019. The pollution premium. Working paper. University of Hong Kong HKUST.
- Jagannathan, R., Ravikumar, A., Sammon, M., 2018. Environmental, social, and governance criteria: why investors are paying attention. Working paper. National Bureau of Economic Research.
- Krueger, P., Sautner, Z., Starks, L. T., 2020. The importance of climate risks for institutional investors. *The Review of Financial Studies*, 1067–1111.
- Krutli, M., Tran, B. R., Watugala, W., 2019. Pricing Poseidon: extreme weather uncertainty and firm return dynamics. Working paper.
- Lacetera, N., Macis, M., 2010. Social image concerns and prosocial behavior: field evidence from a nonlinear incentive scheme. *Journal of Economic Behavior & Organization* 76, 225–237.
- Lydenberg, S., 2002. Envisioning socially responsible investing: A model for 2006. *Journal of Corporate Citizenship* 7, 57–77.
- McCahery, J. A., Sautner, Z., Starks, L. T., 2016. Behind the scenes: the corporate governance preferences of institutional investors. *Journal of Finance* 71, 2905–2932.
- Morningstar, 2017. Passive fund providers take an active approach to investment stewardship.
- Nordhaus, W., 1977. Economic growth and climate: the carbon dioxide problem. *American Economic Review* 67, 341–346.
- Nordhaus, W., 2010. Some foundational and transformative grand challenges for the social and behavioral sciences: the problem of global public good. Working paper.
- OECD, 2017. Investing in climate, investing in growth. Report.
- Ostrom, E., 2010. Polycentric systems for coping with collective action and global environmental change. *Global Environmental Change* 20, 550–557.

Ramelli, S., Wagner, A., Zeckhauser, R. J., Ziegler, A., 2018. Stock price rewards to climate saints and sinners: Evidence from the Trump election. Working paper. National Bureau of Economic Research.

Riedl, A., Smeets, P., 2017. Why do investors hold socially responsible mutual funds? *Journal of Finance* 72, 2505–2550.

Schmidt, C., Fahlenbrach, R., 2017. Do exogenous changes in passive institutional ownership affect corporate governance and firm value? *Journal of Financial Economics* 124, 285–306.

Stavins, R., 2011. The problem of the commons: still unsettled after 100 years. *American Economic Review*, 101, 81–108.

Stern, N., 2008. The economics of climate change. *American Economic Review: Papers and Proceedings* 98, 1–37.

Ung, D., Tang, K., Weimann, C., Olufunwa, A., 2016. Resource efficiency: A case study in carbon and water use. Working paper.

Wei, W., Young, A., 2019. Selection bias or treatment effect? A re-examination of Russell 1000/2000 Index reconstitution. Working Paper.

Appendix A. Variable definitions

<i>Log(CO₂)</i>	Logarithm of the total GHG emissions of the firm measured in equivalents of metric tons of CO ₂ .
<i>Size</i>	Logarithm of the firm's total assets.
<i>Log(BM)</i>	Logarithm of the book value of common equity scaled by the market value of equity.
<i>ROA</i>	Net income scaled by total assets.
<i>Leverage</i>	Total debt scaled by total assets. Total debt is the sum of long-term debt and the debt in current liabilities.
<i>PPE</i>	Property, Plant and Equipment (PPE) scaled by total assets.
<i>Engagement_Blackrock</i>	Indicator variable that equals one if BlackRock engages with the firm from July 1, 2018 until June 30, 2019, and zero otherwise. The data includes all engagements.
<i>Engagement_StateStreet</i>	Indicator variable that equals one if State Street Global Advisors engages with the firm from January 1, 2018 until December 31, 2018, and zero otherwise. The data includes engagements about Environmental/Social issues.
<i>Engagement_Vanguard</i>	Indicator variable that equals one if Vanguard engages with the firm from July 1, 2018 until December 31, 2018, and zero otherwise. The data includes engagements about "Oversight of strategy and risk" (which include environmental issues).
<i>Big3_Hldg</i>	Big Three's holding in the firm, namely, the fraction of the firms' equity owned by mutual funds managed by BlackRock, Vanguard, or State Street Global Advisors.
<i>Blackrock_Hldg</i>	BlackRock's holding in the firm, namely, the fraction of the firms' equity owned by BlackRock's mutual funds.
<i>StateStreet_Hldg</i>	State Street's holding in the firm, namely, the fraction of the firms' equity owned by State Street Global Advisors's mutual funds.
<i>Vanguard_Hldg</i>	Vanguard's holding in the firm, namely, the fraction of the firms' equity owned by State Vanguard's mutual funds.
<i>MSCI_Constituent</i>	Indicator variable that equals one if the firm is a MSCI constituent, and zero otherwise.
<i>NonBig3_Hldg</i>	Non-Big Three's holding in the firm, namely, the fraction of the firms' equity owned by funds managed by institutions other than BlackRock, Vanguard, and State Street Global Advisors.
<i>NonBig3_Index</i>	Fraction of the firm's equity held by indexers other than the Big Three.
<i>NonBig3_NonIndex</i>	Difference between <i>NonBig3_Hldg</i> and <i>NonBig3_Index</i> .
<i>NonBig3_LT</i>	Fraction of the firm's equity held by long-term investors other than the Big Three. An investor is defined as a long-term if its portfolio turnover is in the bottom 33 rd percentile of the distribution.
<i>NonBig3_ST</i>	Difference between <i>NonBig3_Hldg</i> and <i>NonBig3_LT</i> .
<i>NonBig3_Large</i>	Fraction of the firm's equity held by the largest 100 institutions by Assets Under Management (AUM) other than the Big Three.
<i>NonBig3_Small</i>	Difference between <i>NonBig3_Hldg</i> and <i>NonBig3_Large</i> .

<i>Big3_Target</i>	Indicator variable that equals one if all three probabilities of engagement by Blackrock, State Street and Vanguard (as predicted by the analysis in Table 3) are in the top quintile of the sample distribution, and zero otherwise.
<i>Blackrock_Target</i>	Indicator variable for whether the probability of engagement by Blackrock (as predicted by the analysis in Table 3) is in the top quintile of the distribution over the sample period.
<i>StateStreet_Target</i>	Indicator variable for whether the probability of engagement by State Street Global Advisors (as predicted by the analysis in Table 3) is in the top quintile of the distribution over the sample period.
<i>Vanguard_Target</i>	Indicator variable for whether the probability of engagement by Vanguard (as predicted by the analysis in Table 3) is in the top quintile of the distribution over the sample period.
<i>Blackrock_Commitment</i>	Time-varying index measuring Blackrock's commitment to deal with environmental issues (see Appendix C for details).
<i>StateStreet_Commitment</i>	Time-varying index measuring State Street Global Advisors' commitment to deal with environmental issues (see Appendix C for details).
<i>Vanguard_Commitment</i>	Time-varying index measuring Vanguard's commitment to deal with environmental issues (see Appendix C for details).

Appendix B. Data on corporate carbon emissions

B.1. Process followed by Trucost to assess corporate carbon emissions

Trucost has developed a comprehensive approach to evaluate corporate carbon emissions. This approach employs an environmental profiling model that tracks 464 industries worldwide. In particular, Trucost follows four steps (Ung, Tang, Weimann, and Olufunwa, 2016):

1. **Analysis of company data:** Financial information is assessed to establish the primary business activities of an organization. Revenues to those activities are apportioned accordingly.
2. **Mapping of company data:** Using the information in Step 1, the environmental profiling model calculates an organization's direct and supply chain environmental impacts.
3. **Incorporation of disclosures and public data:** The analysis incorporates reported environmental data obtained from public sources (such as annual reports and websites). Where environmental reporting is not available, Trucost draws on sources of proxy information (namely, fuel use or expenditure data), which can be converted into emissions data. Reported figures are standardized for consistency.
4. **Company verification process:** Each analyzed company is invited to verify or refine the environmental assessment conducted by Trucost.

B.2. Example of corporate carbon emissions

The table below reproduces the GHG emission amounts reported by 3M Co. to the Carbon Disclosure Project (CDP). Amounts are expressed in tons and in CO₂ equivalents to aid comparison.

Emission	Source	Quantity Tonnes	CO ₂ Equivalent (CO ₂ e) Tonnes
Direct CO ₂ e (Scope 1)			3,288,540
Carbon Dioxide To Air	CDP	3,191,764	3,191,764
HFCs To Air	CDP	14	34,045
Dinitrogen Oxide (Nitrous Oxide) To Air	CDP	108	33,586
PFCs To Air	CDP	2.69	21,094
Methane To Air	CDP	248	5,201
Sulphur Hexafluoride To Air	CDP	0.12	2,849
Other Direct CO ₂ e			4,892
Other Direct CO ₂ e	PRE	-	4,892
First Tier Supply Chain CO ₂ e			3,977,000
Purchased Electricity (Scope 2) CO ₂ e	CDP	-	1,690,000
Non-Electricity Supply Chain (Scope 3) CO ₂ e	TC	-	2,287,000
All Other Supply Chain (Scope 3) CO ₂ e			4,072,000
Sum Of All Other Supply Chain (Scope 3) CO ₂ e	TC	-	4,072,000
Total			11,342,431

Appendix C. Measurement of Big Three’s attention to environmental issues

Panel A. Blackrock

	<u>Indicator var.</u>	<u>2011</u>	<u>2012</u>	<u>2013</u>	<u>2014</u>	<u>2015</u>	<u>2016</u>	<u>2017</u>	<u>2018</u>
<u>Engagement</u>									
# Meetings related to E	1 if > 100, 0 otw.	0	0	1	0	0	0	1	1
E is an engagement priority		0	0	0	0	0	0	1	1
<u>Voting</u>									
Proxy voting guidelines include E		0	0	0	0	1	1	1	1
# Votes for E proposals	1 if > 10%, 0 otw.	0	0	0	0	0	0	0	0
<u>Public statements</u>									
CEO letter cites E		0	1	0	0	0	1	1	1
# Press releases about E	1 if > 10, 0 otw.	1	0	0	0	0	0	1	1
PRI signatory		1	1	1	1	1	1	1	1

Panel B. State Street

	<u>Indicator var.</u>	<u>2011</u>	<u>2012</u>	<u>2013</u>	<u>2014</u>	<u>2015</u>	<u>2016</u>	<u>2017</u>	<u>2018</u>
<u>Engagement</u>									
# Meetings related to E	1 if > 100, 0 otw.	0	0	0	0	0	0	1	0
E is an engagement priority		1	1	1	1	1	1	1	1
<u>Voting</u>									
Proxy voting guidelines include E		0	0	0	1	1	1	1	1
# Votes for E proposals	1 if > 10%, 0 otw.	0	0	0	1	1	1	1	1
<u>Public statements</u>									
CEO letter cites E		0	0	0	0	0	0	1	0
# Press releases about E	1 if > 10, 0 otw.	0	0	0	0	0	0	1	0
PRI signatory		0	1	1	1	1	1	1	1

Panel C. Vanguard

	<u>Indicator var.</u>	<u>2011</u>	<u>2012</u>	<u>2013</u>	<u>2014</u>	<u>2015</u>	<u>2016</u>	<u>2017</u>	<u>2018</u>
<u>Engagement</u>									
# Meetings related to E	1 if > 100, 0 otw.	0	0	0	0	0	0	0	1
E is an engagement priority		0	0	0	0	0	0	0	0
<u>Voting</u>									
Proxy voting guidelines include E		0	0	0	0	0	0	0	0
# Votes for E proposals	1 if > 10%, 0 otw.	0	0	0	0	0	0	0	1
<u>Public statements</u>									
CEO letter cites E		0	0	0	0	0	0	0	1
# Press releases about E	1 if > 10, 0 otw.	0	0	0	0	0	0	1	0
PRI signatory		0	0	0	0	1	1	1	1

Panel D. Index of Commitment to deal with environmental Engagement (sum of above seven indicator variables)

	<u>2011</u>	<u>2012</u>	<u>2013</u>	<u>2014</u>	<u>2015</u>	<u>2016</u>	<u>2017</u>	<u>2018</u>
Blackrock	2	2	2	1	2	3	6	6
State Street Global Advisors	1	2	2	4	4	4	7	4
Vanguard	0	0	0	0	1	1	2	4

Notes:

- i) “E” stands for “the environment” (which includes climate-related issues and carbon emissions).
- ii) “PRI” stands for Principles for Responsible Investment.
- iii) All data items and the index values are zero before 2011. We manually gather above information from public records of CEO letters, Investment Stewardship Annual Reports, Proxy Voting and Engagement Guidelines, and a Factiva search on the press releases about the Big Three investors on the main US and UK newspapers using the following keywords (“Proxy Voting Guidelines”, “Environmental Shareholders Proposals”, “Climate-risk/change”, “CEO Letter”).

Figure 1. Big Three Ownership thresholds and carbon emissions

We estimate equation (1) but replace *Big3_Hldg* with separate indicator variables, each marking a 1% interval of *Big3_Hldg* values. That is, the first indicator variable equals one if *Big3_Hldg* \in [0%, 1%] and zero otherwise, the second indicator variable equals one if *Big3_Hldg* \in (1%, 2%] and zero otherwise, the third indicator variable equals one if *Big3_Hldg* \in (2%, 3%] and zero otherwise, and so forth. The last indicator variable equals one if *Big3_Hldg* >10% and zero otherwise. We omit the first indicator variable, that is, the indicator variable for *Big3_Hldg* \in [0%, 1%]. It therefore serves as benchmark, and has a coefficient value of zero (and no confidence interval). The figure plots the coefficient estimates of the 10 intervals together with their 95% confidence limits. The dependent variable, *Log(CO₂)*, the sample, control variables, and fixed effects are as in Model 3, Table 4, Panel A. Filled dots (as opposed to empty dots) denote that the coefficient is statistically different from the benchmark (i.e., *Big3_Hldg* \in [0%, 1%]) (two-tailed, 10% level).

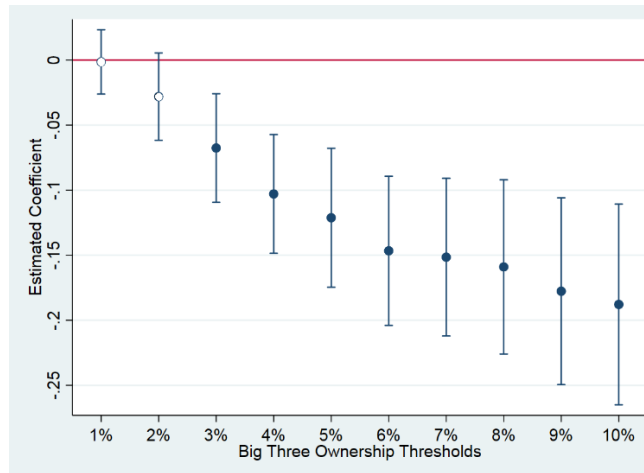


Figure 2. Big Three ownership and carbon emissions by year

We estimate equation (1) year by year and plot the estimated coefficients on *Big3_Hldg* (point estimates) in each year, along with the corresponding 95% confidence intervals. Filled dots (as opposed to empty dots) denote that the coefficient is statistically different from zero at the 10% level (two-tailed).

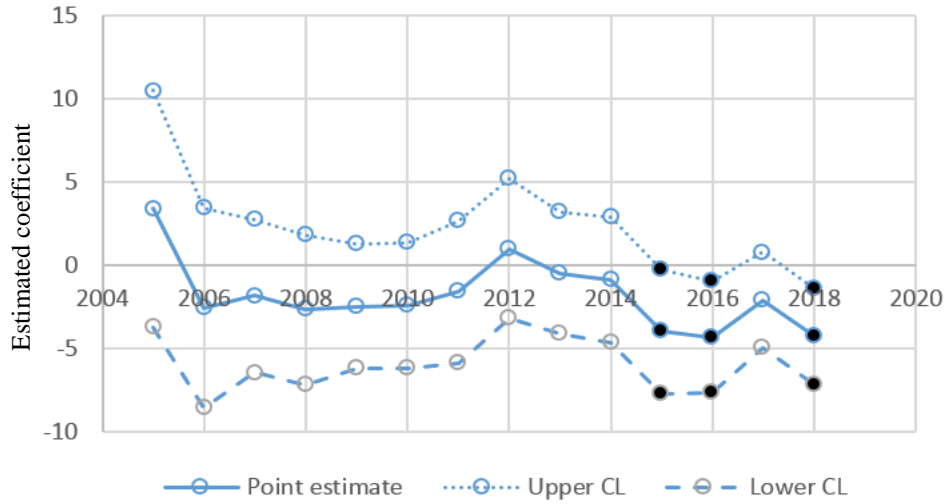


Table 1. Sample construction

This table describes the procedure to construct our sample.

Steps of the sample selection procedure:	# Firm-Years	# Distinct Firms
Firms covered by Trucost from 2005 to 2018	55,118	9,973
less observations missing institutional ownership information	44,252	8,109
less observations missing accounting and market data	42,193	7,751
Final sample:		
MSCI constituents	19,224	2,104
Other firms	22,969	5,647

Table 2. Descriptive statistics

This table reports descriptive statistics for the variables and observations used in our tests. The sample spans from 2005 to 2018, and includes 19,224 firm-year observations in the MSCI subsample and 22,969 firm-year observations in the non-MSCI subsample. Panel A presents descriptive statistics for the main variables used in our tests. Panel B presents descriptive statistics by country. Panel C presents descriptive statistics by industry affiliation. Variables are defined in Appendix A.

Panel A. Descriptive statistics of key variables

	<i>MSCI firms</i>					<i>Non-MSCI firms</i>				
	Std Dev	P25	Median	Mean	P75	Std Dev	P25	Median	Mean	P75
<i>Log(CO₂)</i>	1.81	13.01	14.18	14.25	15.52	1.99	10.32	11.74	11.65	13.00
<i>Big3_Hldg</i>	0.040	0.016	0.035	0.048	0.070	0.052	0.005	0.018	0.042	0.062
<i>Blackrock_Hldg</i>	0.013	0.008	0.015	0.018	0.024	0.024	0.001	0.006	0.018	0.026
<i>StateStreet_Hldg</i>	0.008	0.001	0.005	0.008	0.012	0.006	0.000	0.001	0.004	0.004
<i>Vanguard_Hldg</i>	0.024	0.004	0.011	0.022	0.035	0.027	0.000	0.008	0.020	0.029
<i>NonBig3_Hldg</i>	0.288	0.147	0.309	0.405	0.695	0.275	0.095	0.250	0.334	0.545
<i>Controls:</i>										
<i>Size</i>	1.51	8.49	9.37	9.56	10.45	1.5	6.02	6.96	7.01	7.91
<i>Log(BM)</i>	0.83	-1.24	-0.74	-0.83	-0.28	0.92	-1.14	-0.57	-0.67	-0.05
<i>ROA</i>	0.06	0.02	0.04	0.05	0.08	0.1	0.01	0.04	0.03	0.07
<i>Leverage</i>	0.17	0.11	0.23	0.24	0.35	0.19	0.04	0.18	0.21	0.33
<i>PPE</i>	0.24	0.07	0.21	0.27	0.42	0.24	0.05	0.19	0.25	0.38

Panel B. Sample distribution by country

	<i>MSCI firms</i>					<i>Non-MSCI firms</i>				
	# obs.	% obs.	# firms	Mean CO ₂ (millions tons)	Mean <i>Big3_Hldg</i>	# obs.	% obs.	# firms	Mean CO ₂ (millions tons)	Mean <i>Big3_Hldg</i>
<i>Austria</i>	105	0.5	14	8.00	0.02	123	0.5	23	0.49	0.02
<i>Australia</i>	835	4.3	95	4.21	0.03	1,367	6.0	288	0.26	0.02
<i>Belgium</i>	146	0.8	18	5.20	0.02	125	0.5	32	1.08	0.02
<i>Canada</i>	1,019	5.3	116	4.06	0.03	976	4.2	255	0.58	0.02
<i>Switzerland</i>	428	2.2	50	9.18	0.03	766	3.3	143	0.59	0.01
<i>Germany</i>	597	3.1	67	17.09	0.03	616	2.7	134	2.41	0.02
<i>Denmark</i>	160	0.8	22	1.56	0.02	109	0.5	25	5.91	0.02
<i>Spain</i>	328	1.7	40	9.20	0.02	189	0.8	43	1.37	0.01
<i>Finland</i>	207	1.1	23	4.72	0.02	127	0.6	30	0.68	0.01
<i>France</i>	863	4.5	82	12.08	0.02	503	2.2	117	0.96	0.01
<i>Great Britain</i>	1,252	6.5	158	6.00	0.03	3,048	13.3	404	0.36	0.02

<i>Greece</i>	48	0.2	10	9.23	0.01	85	0.4	16	0.36	0.01
<i>Hong Kong</i>	422	2.2	54	3.97	0.02	510	2.2	80	3.47	0.02
<i>Ireland</i>	240	1.2	29	4.69	0.07	74	0.3	17	0.61	0.03
<i>Israel</i>	83	0.4	15	2.13	0.02	344	1.5	71	0.39	0.01
<i>Italy</i>	262	1.4	36	13.93	0.02	414	1.8	96	1.75	0.01
<i>Japan</i>	4,345	22.6	429	6.41	0.02	5,030	21.9	1,664	0.41	0.01
<i>Netherlands</i>	297	1.5	33	5.86	0.03	295	1.3	57	0.77	0.02
<i>Norway</i>	116	0.6	17	10.26	0.01	136	0.6	38	0.44	0.01
<i>New Zealand</i>	67	0.3	11	1.39	0.02	99	0.4	29	0.67	0.01
<i>Portugal</i>	87	0.5	11	7.29	0.01	26	0.1	8	2.26	0.01
<i>Sweden</i>	331	1.7	34	2.40	0.02	415	1.8	110	0.58	0.01
<i>Singapore</i>	328	1.7	34	4.21	0.02	193	0.8	52	0.41	0.01
<i>U.S.</i>	6,658	34.6	706	8.05	0.09	7,399	32.2	1,915	0.75	0.10

Panel C. Sample distribution by industry

	<i>MSCI firms</i>					<i>Non-MSCI firms</i>				
	# obs.	% obs.	# firms	Mean CO ₂ (millions tons)	Mean <i>Big3_Hldg</i>	# obs.	% obs.	# firms	Mean CO ₂ (millions tons)	Mean <i>Big3_Hldg</i>
<i>Food</i>	881	4.6	97	11.64	0.04	909	4.0	226	1.47	0.03
<i>Mining and Minerals</i>	412	2.1	50	10.72	0.05	797	3.5	165	0.86	0.04
<i>Oil and Petroleum Products</i>	1,007	5.2	118	22.20	0.06	756	3.3	170	1.45	0.05
<i>Textiles, Apparel & Footwear</i>	231	1.2	25	3.07	0.04	294	1.3	86	0.42	0.03
<i>Consumer Durables</i>	314	1.6	34	4.73	0.05	532	2.3	128	0.41	0.04
<i>Chemicals</i>	668	3.5	69	10.28	0.04	559	2.4	133	1.27	0.04
<i>Drugs, Soap, Perfume, Tobacco</i>	977	5.1	99	3.48	0.05	767	3.3	198	0.24	0.04
<i>Construction and Constr. Materials</i>	986	5.1	113	8.34	0.04	1,556	6.8	402	0.86	0.03
<i>Steel Works, etc.</i>	340	1.8	41	20.98	0.03	383	1.7	74	1.89	0.05
<i>Fabricated Products</i>	108	0.6	9	4.02	0.07	235	1.0	53	0.75	0.06
<i>Machinery and Business Equipment</i>	2,071	10.8	223	3.39	0.05	2,568	11.2	600	0.41	0.04
<i>Automobiles</i>	562	2.9	56	11.99	0.05	573	2.5	126	2.49	0.04
<i>Transportation</i>	1,159	6.0	126	6.70	0.04	995	4.3	217	1.65	0.04
<i>Utilities</i>	1,126	5.9	109	34.03	0.06	592	2.6	112	4.67	0.06
<i>Retail Stores</i>	1,237	6.4	130	3.77	0.05	1,457	6.3	380	0.47	0.04
<i>Banks, Insurance, and Other Financials</i>	3,025	15.7	329	0.71	0.04	3,269	14.2	825	0.22	0.05
<i>Other</i>	4,120	21.4	476	1.93	0.05	6,727	29.3	1,752	0.28	0.04

Table 3. Big Three engagements with individual firms

This table presents an analysis of the determinants of the engagements of the Big Three (BlackRock, Vanguard, and State Street) with individual firms in their portfolios. The dependent variable *Engagement_Blackrock* is an indicator variable that equals one if BlackRock engages with the firm, and zero otherwise. The other two dependent variables, *Engagement_StateStreet* and *Engagement_Vanguard*, are defined in the same way for State Street and Vanguard, respectively. In the case of State Street we consider only engagements about Environmental/Social issues. In the case of Vanguard we consider only engagements about “Oversight of strategy and risk” (which include environmental issues). The engagement data are from year 2018. The independent variables are measured at the end of the prior year. *Log(CO₂)* is the logarithm of the firm’s total GHG emissions. *Blackrock_Hldg* is BlackRock’s holding in the firm, namely, the fraction of the firms’ equity owned by BlackRock’s mutual funds. *StateStreet_Hldg* and *Vanguard_Hldg* are defined in the same way for State Street and Vanguard, respectively. The control variables are defined in Appendix A. *t*-statistics are in parentheses. *, **, and *** denote significance at the 10%, 5%, and 1% levels (two-tail) respectively. Intercepts are omitted.

	Dependent Variable:								
	<i>Engagement_Blackrock</i>			<i>Engagement_StateStreet</i>			<i>Engagement_Vanguard</i>		
	<i>Logit</i>	<i>OLS</i>	<i>OLS</i>	<i>Logit</i>	<i>OLS</i>	<i>OLS</i>	<i>Logit</i>	<i>OLS</i>	<i>OLS</i>
(1)	(2)	(3)	(4)	(5)	(6)	(7)	(8)	(9)	
<i>Log(CO₂)</i>	0.156*** (5.803)	0.022*** (5.233)	0.025*** (3.676)	0.315*** (5.937)	0.013*** (5.649)	0.009** (2.355)	0.190*** (3.791)	0.006** (2.374)	0.003 (0.671)
<i>Blackrock_Hldg</i>	16.890*** (8.631)	2.425*** (7.414)	2.232*** (5.863)						
<i>StateStreet_Hldg</i>				57.763*** (7.382)	4.083*** (8.231)	2.107*** (2.944)			
<i>Vanguard_Hldg</i>							23.363*** (10.227)	1.218*** (9.453)	-0.115 (-0.458)
<i>MSCI_Constituent</i>	0.752*** (6.704)	0.153*** (8.071)	0.134*** (6.977)	0.692*** (2.886)	0.029*** (2.658)	0.029** (2.489)	0.711*** (3.013)	0.043*** (3.857)	0.045*** (3.941)
<i>Controls:</i>									
<i>Size</i>	0.292*** (7.360)	0.043*** (6.966)	0.052*** (6.288)	0.365*** (4.823)	0.013*** (3.715)	0.024*** (5.017)	0.690*** (9.188)	0.026*** (7.112)	0.036*** (7.278)
<i>Log(BM)</i>	-0.051 (-0.849)	-0.009 (-0.963)	-0.015 (-1.508)	-0.241** (-2.298)	-0.016*** (-2.932)	-0.009 (-1.632)	-0.320*** (-3.027)	-0.024*** (-4.294)	-0.014** (-2.392)
<i>ROA</i>	0.114 (0.155)	-0.111 (-1.224)	-0.132 (-1.443)	1.083 (0.700)	-0.036 (-0.703)	0.010 (0.180)	4.326*** (2.671)	-0.002 (-0.037)	0.043 (0.821)
<i>Leverage</i>	-0.826*** (-2.892)	-0.139*** (-3.165)	-0.105** (-2.384)	0.358 (0.685)	0.003 (0.120)	-0.004 (-0.140)	-0.943* (-1.816)	-0.058** (-2.264)	-0.064** (-2.446)
<i>PPE</i>	-0.287 (-1.523)	-0.045 (-1.565)	-0.017 (-0.516)	0.227 (0.663)	0.021 (1.264)	0.021 (1.085)	0.326 (0.992)	0.022 (1.298)	0.029 (1.490)
<i>Country FE</i>	NO	NO	YES	NO	NO	YES	NO	NO	YES
<i>Industry FE</i>	NO	NO	YES	NO	NO	YES	NO	NO	YES
Pseudo R ² /R ²	0.16	0.17	0.22	0.24	0.11	0.14	0.29	0.12	0.16
# Obs.	3,262	3,262	3,262	3,286	3,286	3,286	3,323	3,323	3,323

Table 4. Big Three ownership and firms' carbon emissions

This table presents an analysis of the association between levels of Big Three ownership and levels of total carbon emissions. The dependent variable is the logarithm of CO_2 (i.e., the firm's total GHG emissions measured in equivalents of metric tons of CO_2). The experimental variable, *Big3_Hldg*, is the fraction of the firm's equity owned by mutual funds sponsored by BlackRock, Vanguard, or State Street. *NonBig3_Hldg* is the fraction of the firms' equity owned by funds managed by institutions other than BlackRock, Vanguard, and State Street. The control variables are defined in Appendix A. Columns (1) – (3) report results corresponding to the subsample of firms that are members of MSCI World Index. Columns (4) – (6) report results corresponding to the subsample of firms that are not members of MSCI World Index. Both subsamples span the period from 2005 to 2018. Independent variables are measured at the end of the prior year. Standard errors are clustered at the firm and year level. *t*-statistics are in parentheses. *, **, and *** denote significance at the 10%, 5%, and 1% levels (two-tail) respectively. Intercepts are omitted.

	Dependent Variable: $\text{Log}(CO_2)$					
	MSCI			Non-MSCI		
	(1)	(2)	(3)	(4)	(5)	(6)
<i>Big3_Hldg</i>	-3.44*** (-5.76)	-1.69** (-2.27)	-1.00*** (-2.83)	-0.76 (-1.09)	0.66 (1.41)	0.46 (1.60)
<i>NonBig3_Hldg</i>	-0.04 (-0.25)	-0.12 (-0.74)	-0.07 (-0.75)	0.36*** (3.43)	0.26** (2.50)	0.18** (2.47)
<i>Controls:</i>						
<i>Size</i>	0.79*** (42.88)	0.80*** (42.21)	0.55*** (13.77)	0.81*** (50.85)	0.79*** (54.50)	0.56*** (14.96)
<i>Log(BM)</i>	0.01 (0.55)	0.01 (0.30)	-0.02** (-2.29)	-0.06*** (-3.25)	-0.06*** (-3.16)	-0.05*** (-4.36)
<i>ROA</i>	1.52*** (4.55)	1.53*** (4.65)	0.89*** (5.39)	2.95*** (14.26)	2.83*** (12.89)	0.57*** (6.30)
<i>Leverage</i>	0.03 (0.23)	0.02 (0.15)	0.05 (0.69)	0.38*** (3.03)	0.41*** (3.29)	0.17** (2.22)
<i>PPE</i>	1.27*** (8.32)	1.27*** (8.24)	-0.01 (-0.08)	1.19*** (12.01)	1.15*** (11.54)	0.51*** (4.38)
<i>Country FE</i>	YES	YES	NO	YES	YES	NO
<i>Industry FE</i>	YES	YES	NO	YES	YES	NO
<i>Year FE</i>	NO	YES	YES	NO	YES	YES
<i>Firm FE</i>	NO	NO	YES	NO	NO	YES
R ²	0.75	0.75	0.98	0.73	0.74	0.98
# Obs.	19,224	19,224	19,134	22,969	22,969	22,468

Table 5. Changes in Ownership

This table repeats the analysis in Table 4 using alternative specifications based on changes in ownership. Panel A replaces *Big3_Hldg* with *Big3_Increase*, defined as one if $\Delta_Big3_Hldg > 1\%$, and zero otherwise. *NonBig3_Increase* is defined as one if $\Delta_NonBig3_Hldg > 1\%$, and zero otherwise. Panel B presents results for MSCI firms using a specification in changes. $\Delta_CO_2(t-s, t)$ is the fractional change of CO₂ emissions from year t-s to year t, i.e., $(CO_{2t} - CO_{2t-s})/CO_{2t-s}$ (s=1, ..., 12). $\Delta_Big3_Hldg(t-s-1, t-1)$ is the change in *Big3_Hldg* from year t-s-1 to year t-1. $\Delta_NonBig3_Hldg(t-s-1, t-1)$ is the change in *NonBig3_Hldg* from year t-s-1 to year t-1. Panel C repeats the analysis in Panel B for non-MSCI firms. The control variables are defined in Appendix A. Both subsamples span the period from 2005 to 2018. Independent variables are measured at the end of the prior year. Standard errors are clustered at the firm and year level in Panel A and at the firm level in Panels B and C. *t*-statistics are in parentheses. *, **, and *** denote significance at the 10%, 5%, and 1% levels (two-tail) respectively. Intercepts are omitted.

Panel A. Non-negligible changes in Big Three ownership

	Dependent Variable: $\text{Log}(CO_2)$					
	MSCI			Non-MSCI		
	(1)	(2)	(3)	(4)	(5)	(6)
<i>Big3_Increase</i>	-0.10*** (-4.49)	-0.04** (-2.52)	-0.02*** (-3.97)	-0.05* (-1.65)	-0.02 (-0.63)	0.00 (0.33)
<i>NonBig3_Increase</i>	-0.02 (-0.65)	-0.04* (-2.05)	-0.01* (-1.93)	-0.02 (-1.45)	-0.03* (-2.09)	0.00 (0.50)
<i>Controls</i>	YES	YES	YES	YES	YES	YES
<i>Country FE</i>	YES	YES	NO	YES	YES	NO
<i>Industry FE</i>	YES	YES	NO	YES	YES	NO
<i>Year FE</i>	NO	YES	YES	NO	YES	YES
<i>Firm FE</i>	NO	NO	YES	NO	NO	YES
R ²	0.74	0.75	0.98	0.73	0.74	0.98
# Obs.	19,224	19,224	19,134	22,969	22,969	22,468

Panel B. Specification in changes (MSCI firms)

	Dependent variable: $\Delta_CO_2(t-s, t)$											
	(1)	(2)	(3)	(4)	(5)	(6)	(7)	(8)	(9)	(10)	(11)	(12)
	s=1	s=2	s=3	s=4	s=5	s=6	s=7	s=8	s=9	s=10	s=11	s=12
$\Delta_Big3_Hldg(t-s-1, t-1)$	-0.78** (-2.08)	-1.42* (-1.82)	-2.68** (-2.16)	-4.07** (-2.18)	-3.81* (-1.76)	-5.14** (-2.11)	-4.75** (-2.26)	-4.58** (-2.52)	-6.76* (-1.69)	-3.32* (-1.90)	-4.45** (-2.01)	-5.46* (-1.88)
$\Delta_NonBig3_Hldg(t-s-1, t-1)$	0.20** (2.17)	0.07 (0.44)	-0.34 (-0.73)	-0.13 (-0.53)	-0.65** (-2.02)	-1.48 (-1.58)	-1.39* (-1.83)	-1.97* (-1.89)	-3.41 (-1.53)	-1.31** (-2.13)	-0.97 (-1.20)	-1.16 (-1.22)
<i>Controls</i>	YES	YES	YES	YES	YES	YES	YES	YES	YES	YES	YES	YES
<i>Year FE</i>	YES	YES	YES	YES	YES	YES	YES	YES	YES	YES	YES	YES
R ²	0.01	0.01	0.02	0.02	0.03	0.04	0.07	0.11	0.07	0.16	0.20	0.17
# Obs.	16,980	14,917	13,025	11,350	9,824	8,390	7,072	5,856	4,699	3,620	2,595	1,631

Table 5. Changes in Ownership (cont'ed)

Panel C. Specification in changes (non-MSCI firms)

	Dependent variable: Δ_CO_2 (t-s, t)											
	(1) s=1	(2) s=2	(3) s=3	(4) s=4	(5) s=5	(6) s=6	(7) s=7	(8) s=8	(9) s=9	(10) s=10	(11) s=11	(12) s=12
Δ_Big3_Hldg (t-s-1, t-1)	1.31 (1.20)	1.46 (0.87)	1.81 (1.06)	1.00 (0.90)	5.51 (1.04)	4.83 (1.06)	-1.23 (-0.51)	-0.19 (-0.06)	2.29 (0.63)	2.31 (0.53)	0.34 (0.10)	-2.34 (-0.67)
$\Delta_NonBig3_Hldg$ (t-s-1, t-1)	0.93* (1.75)	1.51** (2.23)	0.75 (1.52)	1.40 (1.14)	1.96 (1.11)	1.20 (0.89)	0.28 (0.49)	0.60 (0.82)	1.51 (1.07)	2.43 (1.05)	1.95 (1.01)	0.55 (0.67)
<i>Controls</i>	YES	YES	YES	YES	YES	YES	YES	YES	YES	YES	YES	YES
<i>Year FE</i>	YES	YES	YES	YES	YES	YES	YES	YES	YES	YES	YES	YES
R ²	0.01	0.03	0.04	0.03	0.03	0.04	0.09	0.09	0.09	0.08	0.08	0.14
# Obs.	16,964	11,765	7,638	6,237	4,982	3,953	3,306	2,714	2,162	1,613	1,165	717

Table 6. Breakdown of Ownership

This table repeats the analysis in Table 4 decomposing the variables *Big3_Hldg* and *NonBig3_Hldg*. *Blackrock_Hldg* is BlackRock's holding in the firm, namely, the fraction of the firms' equity owned by BlackRock's mutual funds. *StateStreet_Hldg* and *Vanguard_Hldg* are defined in the same way for the other two Big Three institutions. *NonBig3_Index* is fraction of the firm's equity held by indexers other than the Big Three. *NonBig3_NonIndex* is the difference between *NonBig3_Hldg* and *NonBig3_Index*. *NonBig3_LT* is fraction of the firm's equity held by long-term investors other than the Big Three. *NonBig3_ST* is the difference between *NonBig3_Hldg* and *NonBig3_LT*. *NonBig3_Large* is fraction of the firm's equity held by large investors (top 100 by size) other than the Big Three. *NonBig3_Small* is the difference between *NonBig3_Hldg* and *NonBig3_Large*. In columns (1) – (3) the rest of the specification is as in column (3) of Table 4. In columns (4) – (6) the rest of the specification is as in column (6) of Table 4. Standard errors are clustered at the firm and year level. *t*-statistics are in parentheses. *, **, and *** denote significance at the 10%, 5%, and 1% levels (two-tail) respectively. Intercepts are omitted.

	Dependent Variable: <i>Log(CO₂)</i>							
	MSCI				Non-MSCI			
	(1)	(2)	(3)	(4)	(5)	(6)	(7)	(8)
<i>Big3_Hldg</i>		-0.82** (-2.33)	-1.10*** (-3.20)	-0.96*** (-2.79)		0.44 (1.47)	0.42 (1.49)	0.47 (1.63)
<i>Blackrock_Hldg</i>	-2.79*** (-5.27)				-0.21 (-0.49)			
<i>State Street_Hldg</i>	-2.45* (-1.94)				-0.84 (-0.64)			
<i>Vanguard_Hldg</i>	0.62 (1.13)				2.00*** (3.26)			
<i>NonBig3_Hldg</i>	-0.05 (-0.57)				0.18** (2.48)			
<i>NonBig3_Index</i>		-1.49*** (-2.69)				0.02 (0.05)		
<i>NonBig3_Nonindex</i>		-0.06 (-0.60)				0.17** (2.42)		
<i>NonBig3_LT</i>			-0.34*** (-2.56)				-0.03 (-0.30)	
<i>NonBig3_ST</i>			0.14 (1.39)				0.28*** (4.05)	
<i>NonBig3_Large</i>				-0.26** (-2.10)				0.15 (1.53)
<i>NonBig3_Small</i>				0.12 (1.15)				0.20** (2.73)
<i>Controls</i>	YES	YES	YES	YES	YES	YES	YES	YES
<i>Year FE</i>	YES	YES	YES	YES	YES	YES	YES	YES
<i>Firm FE</i>	YES	YES	YES	YES	YES	YES	YES	YES
R ²	0.98	0.98	0.98	0.98	0.98	0.98	0.98	0.98
# Obs.	19,134	19,134	19,134	19,134	22,468	22,468	22,468	22,468

Table 7. Additional fixed effects

This table repeats the analyses in Table 4 and Table 5 (Panel A) for the MSCI sample including additional fixed effects. The control variables are as in Table 4. Standard errors are clustered at the firm and year level. *t*-statistics are in parentheses. *, **, and *** denote significance at the 10%, 5%, and 1% levels (two-tail) respectively. Intercepts are omitted.

	Dependent Variable: $\text{Log}(CO_2)$									
	Continuous variable					Indicator for $\Delta \text{Big3_Hldg} > 1\%$				
	(1)	(2)	(3)	(4)	(5)	(6)	(7)	(8)	(9)	(10)
<i>Big3_Hldg</i>	-1.21*** (-2.87)	-1.24*** (-3.78)	-0.87** (-2.48)	-0.98*** (-2.77)	-0.53* (-1.92)					
<i>NonBig3_Hldg</i>	-0.03 (-0.21)	0.06 (0.77)	-0.06 (-0.79)	-0.08 (-0.81)	0.06 (0.87)					
<i>Big3_Increase</i>						-0.05*** (-5.65)	-0.02*** (-3.35)	-0.02*** (-4.06)	-0.02*** (-3.95)	-0.01** (-2.12)
<i>NonBig3_Increase</i>						-0.02** (-2.16)	0.00 (0.09)	-0.01* (-1.92)	-0.01** (-2.41)	-0.00 (-0.11)
<i>Controls</i>	NO	YES	YES	YES	YES	NO	YES	YES	YES	YES
<i>Firm FE</i>	YES	YES	YES	YES	YES	YES	YES	YES	YES	YES
<i>Year FE</i>	YES	NO	NO	NO	NO	YES	NO	NO	NO	NO
<i>Country-year FE</i>	NO	YES	NO	NO	NO	NO	YES	NO	NO	NO
<i>Industry-year FE</i>	NO	NO	YES	NO	NO	NO	NO	YES	NO	NO
<i>Sizedecile-year FE</i>	NO	NO	NO	YES	NO	NO	NO	NO	YES	NO
<i>Country-industry-year FE</i>	NO	NO	NO	NO	YES	NO	NO	NO	NO	YES
R ²	0.97	0.98	0.98	0.98	0.99	0.97	0.98	0.98	0.98	0.99
# Obs.	19,134	19,133	19,106	19,134	17,318	19,134	19,133	19,106	19,134	17,318

Table 8. Variation in the Probability of Big Three Engagement

This table presents an analysis of cross-sectional variation in the association between Big Three ownership and total carbon emissions based on the probability that the Big Three engages with the firm. The dependent variable is the logarithm of CO_2 (i.e., the firm's total GHG emissions measured in equivalents of metric tons of CO_2). *Big3_Hldg* is the fraction of the firm's equity owned by mutual funds sponsored by BlackRock, Vanguard, or State Street. *NonBig3_Hldg* is the fraction of the firms' equity owned by funds managed by institutions other than BlackRock, Vanguard, and State Street. *Big3_Target* equals one if all three probabilities of engagement by Blackrock, State Street, and Vanguard (as predicted by the analysis in Table 3) are in the top X-percentile of the sample distribution, and zero otherwise. In column (1), (2), and (3) X-percentile is, respectively: quintile, quartile, and tercile. The control variables are as in Table 4 (see Appendix A for definitions). The analysis is based on the MSCI firms covered by Trucost from 2005 to 2018. *Controls* is as in Table 4. See Appendix A for variable definitions. Independent variables are measured at the end of the prior year. Standard errors are clustered at the firm and year level. *t*-statistics are in parentheses. *, **, and *** denote significance at the 10%, 5%, and 1% levels (two-tail) respectively. Intercepts are omitted.

	Dependent Variable: $\text{Log}(CO_2)$		
	<i>Top Quintile</i> (1)	<i>Top Quartile</i> (2)	<i>Top Tercile</i> (3)
<i>Big3_Hldg*Big3_Target</i>	-1.80*** (-3.29)	-0.93** (-2.08)	-0.77** (-2.22)
<i>Big3_Hldg</i>	-0.81** (-2.30)	-0.93*** (-2.65)	-1.05*** (-2.83)
<i>NonBig3_Hldg</i>	-0.09 (-0.91)	-0.08 (-0.80)	-0.08 (-0.80)
<i>Controls</i>	YES	YES	YES
<i>Year FE</i>	YES	YES	YES
<i>Firm FE</i>	YES	YES	YES
R ²	0.98	0.98	0.98
# Obs.	19,134	19,134	19,134

Table 9. Variation in Big Three’s Commitment to the Environment

This table presents an analysis of time variation in the association between Big Three ownership and total carbon emissions based on the time-varying commitment of Blackrock, State Street, and Vanguard to tackle environmental issues. The dependent variable is the logarithm of CO_2 (i.e., the firm’s total GHG emissions measured in equivalents of metric tons of CO_2). *Blackrock_Target*, *StateStreet_Target*, and *Vanguard_Target* are, respectively, indicator variables for whether the probability of engagement by Blackrock, State Street, and Vanguard (as predicted by the analysis in Table 3) is in the top quintile of the distribution over the sample period. In Panel A, *Blackrock_Commitment*, *StateStreet_Commitment*, and *Vanguard_Commitment* are, respectively, the time-varying commitment index of Blackrock, State Street, and Vanguard to tackle environmental issues (measured as described in Appendix C). In Panel B, *Post_2016*, *Post_2013*, and *Post_2017* are indicator variables that equal one if the observation is after 2016, 2013, and 2017, respectively (as shown in Appendix C, these are the years of maximum increase in *Blackrock_Commitment*, *StateStreet_Commitment*, and *Vanguard_Commitment*, respectively). In Panel A, the analysis is based on the MSCI firms covered by Trucost from 2005 to 2018. Panel B includes a window of two years around 2016, 2013, and 2017 in columns (1), (2), and (3), respectively (in column (3) only one year is available post 2017). *Controls* is as in Table 4. See Appendix A for variable definitions. Independent variables are measured at the end of the prior year. Standard errors are clustered at the firm and year level. *t*-statistics are in parentheses. *, **, and *** denote significance at the 10%, 5%, and 1% levels (two-tail) respectively. Intercepts are omitted.

Panel A. Whole sample period

	Dependent Variable: $Log(CO_2)$		
	(1)	(2)	(3)
<i>Blackrock_Target*Blackrock_Commitment</i>	-0.03*** (-5.20)		
<i>StateStreet_Target*StateStreet_Commitment</i>		-0.03*** (-3.90)	
<i>Vanguard_Target*Vanguard_Commitment</i>			-0.03*** (-3.31)
<i>Controls</i>	YES	YES	YES
<i>Year FE</i>	YES	YES	YES
<i>Firm FE</i>	YES	YES	YES
R ²	0.98	0.98	0.98
# Obs.	19,134	19,134	19,134

Panel B. Short-window analysis

	Dependent Variable: $Log(CO_2)$		
	(1)	(2)	(3)
<i>Blackrock_Target*Post_2016</i>	-0.04*** (-3.19)		
<i>StateStreet_Target*Post_2013</i>		-0.03** (-2.11)	
<i>Vanguard_Target*Post_2017</i>			-0.03** (-2.28)
<i>Controls</i>	YES	YES	YES
<i>Year FE</i>	YES	YES	YES
<i>Firm FE</i>	YES	YES	YES
R ²	0.99	0.99	0.99
# Obs.	5,212	5,405	3,870

Table 10. Exploiting the reconstitution of the Russell 1000/2000

This table presents an instrumental variable (IV) 2SLS analysis of the association between firm carbon emissions and Big Three ownership. The analysis exploits the reconstitution of the Russell 1000/2000 indexes. The results correspond to the estimation of the following model (Appel et al., 2019a):

$$\text{First stage (Panel A): } \widehat{Big3_Hldg}_{it} = \alpha + \beta * Russell2000_{it} + \sum \lambda_n * (\ln(Mktcap_{it}))^n + v * \ln(Float_{it}) + \phi_1 * Band_{it} + \phi_2 * Russell2000_{it-1} + \phi_3 * Band_{it} * Russell2000_{it-1} + \tau_t + \delta_i + \varepsilon_{it} \quad (1)$$

$$\text{Second stage (Panel B): } \log(CO_2)_{it+1} = \alpha + \beta * \widehat{Big3_Hldg}_{it} + \sum \lambda_n * (\ln(Mktcap_{it}))^n + v * \ln(Float_{it}) + \phi_1 * Band_{it} + \phi_2 * Russell2000_{it-1} + \phi_3 * Band_{it} * Russell2000_{it-1} + \tau_t + \delta_i + \varepsilon_{it} \quad (2)$$

Big3_Hldg is the fraction of the firms' equity owned by mutual funds sponsored by BlackRock, Vanguard, or State Street. *Russell2000_{it}*, the instrument, equals one if stock *i* is assigned to the Russell 2000 Index in year *t*, and zero otherwise; *Mktcap_{it}* is the market capitalization of stock *i* as of the end of May of year *t* following Ben-David et al. (2019)'s methodology; *Float_{it}* is the float-adjusted market capitalization of stock *i* as of the end-of-June of year *t* used by Russell to determine firm-specific index weights. *Log(CO₂)* is the logarithm of the firm's total GHG emissions per year measured in equivalents of metric tons of CO₂. *Band_{it}* equals one if the firm's end-of-May market capitalization is within the banding interval (see Online Appendix C), and zero otherwise; *Russell2000_{it-1}* equals one if the firm was in the Russell 2000 index in the previous year, and zero otherwise. *Big3_Hldg_{it}* is the fitted value of *Big3_Hldg* from the first stage estimation. The model includes polynomial controls of order 1, 2, and 3. The samples in columns (1), (2), and (3) include firms within bandwidths of 500, 400, and 300 (respectively) around the threshold between Russell 1000 and Russell 2000 in the years 2005-2018 (the same applies to the other two sets of columns). Panel A and B present results of the first and second stage, respectively. Standard errors are clustered at the firm and year level. *t*-statistics are reported in parentheses. *, **, and *** indicate statistical significance at the 10%, 5%, and 1% levels, respectively. Intercepts are omitted.

Panel A. First stage

	Dependent Variable: <i>Big3_Hldg_t</i>								
	(1)	(2)	(3)	(4)	(5)	(6)	(7)	(8)	(9)
<i>Russell2000_t</i>	0.01*** (4.87)	0.01*** (5.57)	0.01*** (5.79)	0.01*** (4.80)	0.01*** (5.43)	0.01*** (5.80)	0.01*** (4.40)	0.01*** (5.35)	0.01*** (5.75)
<i>Polynomial order, N</i>	1	1	1	2	2	2	3	3	3
<i>Bandwidth</i>	500	400	300	500	400	300	500	400	300
<i>Float control</i>	YES	YES	YES	YES	YES	YES	YES	YES	YES
<i>Firm FE</i>	YES	YES	YES	YES	YES	YES	YES	YES	YES
<i>Year FE</i>	YES	YES	YES	YES	YES	YES	YES	YES	YES
<i>Kleibergen-Paap F-stat.</i>	23.71	31.08	33.58	23.02	29.46	33.61	19.39	28.57	33.11
R ²	0.91	0.91	0.91	0.91	0.91	0.91	0.91	0.91	0.91
# Obs.	5,643	4,371	3,182	5,643	4,371	3,182	5,643	4,371	3,182

Table 10. Exploiting the reconstitution of the Russell 1000/2000 (cont'ed)

Panel B. Second stage

	Dependent Variable: $\text{Log}(CO_2)_{t+1}$								
	(1)	(2)	(3)	(4)	(5)	(6)	(7)	(8)	(9)
$\widehat{Big3_Hdlg}_t$	-6.65*	-6.86**	-5.34*	-6.61*	-6.85**	-5.34*	-6.39	-6.66**	-5.34*
	(-1.68)	(-2.12)	(-1.80)	(-1.70)	(-2.06)	(-1.80)	(-1.63)	(-2.03)	(-1.83)
<i>Polynomial order, N</i>	1	1	1	2	2	2	3	3	3
<i>Banding controls</i>	YES	YES	YES	YES	YES	YES	YES	YES	YES
<i>Bandwidth</i>	500	400	300	500	400	300	500	400	300
<i>Float control</i>	YES	YES	YES	YES	YES	YES	YES	YES	YES
<i>Firm FE</i>	YES	YES	YES	YES	YES	YES	YES	YES	YES
<i>Year FE</i>	YES	YES	YES	YES	YES	YES	YES	YES	YES
R ²	0.98	0.98	0.98	0.98	0.98	0.98	0.98	0.98	0.98
# Obs.	5,643	4,371	3,182	5,643	4,371	3,182	5,643	4,371	3,182

The Big Three and Corporate Carbon Emissions Around the World

Online Appendices

Contents

Appendix OA. Discussion on the Big Three's incentives to engage with portfolio firms

Appendix OB. Discussion on Big Three voting on shareholder proposals related to the environment.

Appendix OC. Russell Index construction after 2006

Appendix OD. Additional analyses:

OD.1. Engagements of the Big Three with portfolio firms. Placebo test

OD.2. Alternative clustering of standard errors

OD.3. Alternative estimate of the Probability of Big Three Engagement

OD.4. Time variation in Big Three engagement. Robustness tests.

OD.5. Exploiting the reconstitution of the Russell 1000/2000 Indexes. Placebo test

Appendix OA. Discussion on the Big Three's incentives to engage with portfolio firms

To the extent that a large proportion of the funds sponsored by the Big Three are passively managed, the incentives of the Big Three to engage with portfolio firms are called into question by criticisms to passive investors' role on corporate governance. Regarding the benefits from monitoring portfolio firms, these criticisms point out that passive funds are locked into their investments (e.g., they track indexes), which prevents them from exploiting informational advantages through trading, as well as from "voting with their feet" (i.e., exiting from underperforming companies). Regarding the costs of monitoring portfolio firms, critics claim that passive funds compete against other passive funds on cost, and that monitoring would introduce significant costs associated with research and engagement efforts. These commentators conclude that the combination of modest benefits and substantial costs results in weak incentives to monitor portfolio companies (e.g., Bebchuk and Hirst, 2019).

However, other considerations suggest that the net benefit from monitoring could be greater than suggested by the previous criticisms. As explained by Fisch et al. (2020), considering the incentives of fund sponsors (i.e., the investment management companies that sponsor the fund families) results in new insights on the governance role of the Big Three.

First, the benefits for the Big Three from monitoring portfolio firms can be substantial. The reason is that fund sponsors do not only compete on fees, but also on returns. In particular, index funds do not only compete with funds tracking the same index; they also compete with other passive funds tracking different indexes (currently, there is a proliferation of indexes followed by funds, each yielding a different return). The Big Three also compete with active funds because a number of investors (for example, 401(k) plan participants) can easily shift their assets from one fund to another without paying significant transaction costs or taxes. As such, monitoring portfolio firms can help large index sponsors to attract and retain investors by boosting the returns of the investment choices offered by the sponsor. The benefits for the Big Three from monitoring portfolio firms are likely to be more pronounced in cross-cutting issues such as corporate governance or sustainability than on firm-specific issues. This is because a passive investor can identify practices that are likely to reduce the risk of underperformance with little firm-specific information, and the investment in identifying an improvement can be deployed across a broad range of portfolio companies.

Prior literature provides evidence consistent with this idea. Appel et al. (2016)'s results suggest that more passive ownership affects corporate governance positively when it comes to *low-cost* governance activities, such as consistently voting according to a predefined program at annual meetings or endorsing removal of poison pills and staggered boards. However, the results in Schmidt and Fahlenbrach (2017) suggest that more passive ownership affects corporate governance negatively and reduces shareholder value when it comes to *high-cost* governance activities, such as the monitoring of mergers and acquisitions, the choice of board members, or the accumulation of titles, which often happen outside of annual general meetings and which require continuous monitoring.

Second, the costs for the Big Three from monitoring portfolio firms can be reduced in several ways:

- i) To begin, these large investors can benefit from economies of scale, for example, by setting up a centralized governance or stewardship committee that conducts corporate governance research for all the funds in the family. These economies of scale are especially large when it comes to monitoring cross-cutting issues such as corporate governance or sustainability, as this type of monitoring requires less research in firm-specific characteristics and

circumstances. In particular, ensuring a minimum level of environmental performance can be done imposing a list of requirements to be met by all portfolio firms.

- ii) While the number of Big Three employees exclusively focused on stewardship might seem modest at the first sight, one should consider that these employees work in conjunction with thousands of fund managers around the world. For example, Blackrock's "Investment Stewardship" team is formed by 45 people (a number that has increased significantly over recent years), but this team counts with the feedback of over 2,000 investment professionals, each leading a team of several people (in total, Blackrock's headcount amounts to 14,900 people).³⁹ Importantly, the stewardship team can benefit from firm-specific feedback provided by managers of Blackrock's active funds (a significant proportion of the funds sponsored by the Big Three are actively managed).⁴⁰ To facilitate coordination, Blackrock has built a proprietary database, Aladdin® Research, where employees introduce the key points from any engagement with portfolio companies (Blackrock, 2020). Blackrock refers to this notion of cooperation on firm monitoring as "stewardship ecosystem" (Blackrock, 2020).
- iii) Finally, the large aggregate size of the Big Three gives them significant bargaining power in engagements with portfolio firms (they are likely pivotal voters), further reducing monitoring costs. Indeed, Griffin (2020) documents that the Big Three combined own an average of 20.5% of outstanding shares for S&P 500 companies, and that these institutions are the single largest shareholder in 88% of those companies. Also according to Griffin (2020), the Big Three possess sufficient voting power to be pivotal in a number of environmental proposals.⁴¹

In support of the previous arguments, there is mounting anecdotal evidence that the Big Three are taking an active role in the economy. The reported number of engagements of these investors with portfolio firms is substantial and has increased dramatically in recent years.⁴² Beyond engagements with individual firms, they are also promoting economy-wide initiatives for board-shareholder engagement, they have been active in the regulatory process (for example, by commenting on and calling for change to the rules adopted by the SEC), and they have engaged with index providers in the composition of the indexes (for example, by requesting the exclusion of firms with practices not favored by the Big Three). In addition, the Big Three actively participate with various standard-setting organizations, and, in particular, with the SASB (Sustainability Accounting Standards Board).

³⁹ See <https://www.blackrock.com/corporate/literature/whitepaper/eng-blackrock-worldwide-leader-in-asset-and-risk-management.pdf>.

⁴⁰ For example, 27% of Blackrock's Assets Under Management (i.e., USD 2 trillion) is in actively managed funds (Blackrock, 2019), which makes BlackRock one of the largest active asset managers on the market.

⁴¹ See also the report "Climate in the boardroom: how asset manager voting shaped corporate climate action in 2019". Majority Action, September 2019.

⁴² While public engagements are not very common, private engagements appear to occur relatively often. For example, a recent survey by McCahery, Sautner, and Starks (2016) finds that 63% of very large institutional investors have engaged in direct discussions with management over the past five years, and 45% had private discussions with a company's board outside of management's presence. In their Investment Stewardship Annual Report of 2019, BlackRock said that they engaged with 1,458 companies that year. Moreover, with some companies, BlackRock engaged more than once, bringing the total number of engagements to 2,050. Out of these engagements, BlackRock met with 256 companies to discuss climate-related risks (BlackRock, 2018).

Appendix OB. Discussion on Big Three voting on shareholder proposals related to the environment

Historically, the Big Three have provided relatively little voting support to shareholder proposals related to climate issues. For example, in 2018, Vanguard voted for climate proposals 12% of the time, and BlackRock 10% of the times. In 2019, BlackRock supported 5 of the 36 climate-related shareholder proposals that came to a vote in the U.S. under Rule 14a-8. This relatively low support is sometimes interpreted as evidence that the Big Three are not active in the global effort to reduce corporate carbon emissions.⁴³

Table OB.1 includes disclosures by the Big Three providing an explanation for their lack of support to some shareholder proposals related to climate issues. The argumentation can be summarized as follows:

- i) Shareholder proposals are relatively rare outside the U.S.
- ii) Many of the proposals related to climate issues are inappropriate or unnecessary.
- iii) The proposals that make sense are adopted in advance by companies. As a consequence, the sensible proposals are often withdrawn and end up not being included on the voting ballot. This is in line with the argument that voting could be a credible threat to discipline companies. A threat does not necessarily need to materialize to be effective (i.e., to induce certain behavior).⁴⁴
- iv) Actively engaging with companies could be more effective than supporting shareholder proposals.
- v) Some of the Big Three have supported climate-related proposals in some well-known cases.⁴⁵

The evidence in the academic literature provides some support for this argumentation. Prior research on shareholder voting raises concerns about the efficacy of this governance mechanism (e.g., Karpoff, Malatesta, and Walkling, 1996; Gillan and Starks, 2000). In a more recent survey of this literature, Ferri (2012) concludes that the effectiveness of shareholder proposals as a driver of change is unclear, among other things because they are non-binding for the target firm. In particular, Ertimur, Ferri, and Muslu (2011) find almost no support for proposals to link executive pay to social criteria. Regarding the expected effectiveness of the votes, Ertimur, Ferri, and Stubben (2010) report an implementation rate of 3% for proposals receiving between 30% and 50% of the votes cast, a support level that, historically, has been rarely achieved by climate-related proposals. That said, Ferri (2012) observes that the effectiveness of this type of activism has increased over time (although he also points out that whether this has resulted in value creation is still an open question).

Regarding the voting behavior of the Big Three, in their study of investor ideology based on voting behavior, Bolton, Li, Ravina, and Rosenthal (2020) classify the Big Three as “center-right”, but not as “far right” (these authors include support for environmental proposals among the types of behavior that suggest an ideology towards the “left”).

Last but not least, Matos (2020) points out that the Big Three could face political or business backlash if they become too involved in publicly opposing corporate management. This suggests that, rather than voting, private engagements could be the preferable activism strategy for the Big Three.

⁴³ See, for example, <https://www.cnn.com/2019/10/13/blackrock-vanguard-found-religion-on-climate-doubts-are-growing.html>, <https://www.ft.com/content/8aade207-09bc-41a7-9f0a-24417882f1bc>.

⁴⁴ Nonetheless, there are instances where this threat has materialized. For example, at Exxon’s 2017 annual meeting BlackRock voted against the re-election of two board members in protest about a “non-engagement” policy. Also, after the Volkswagen’s emissions scandal, the Big Three voted against multiple members of the company’s supervisory board (including the Chair) and signed on to shareholder litigation against the company (Platt, 2020).

⁴⁵ For example, BlackRock and Vanguard voted in 2017 to require Exxon Mobil to produce a climate change report.

Appendix OC. Russell Index construction after 2006

In 2007, to curb the number of stocks changing indexes, Russell adjusted the index switching rules by introducing a banding policy. The process of construction of the Russell 1000 and Russell 2000 Indexes after the initiation of this banding policy consists of six steps:⁴⁶

- 1) Russell sorts Russell 3000E Index constituents by their end-of-May market cap in descending order (without adjusting by float).
- 2) Russell computes the total end of May market cap of Russell 3000E Index.
- 3) Russell computes the cumulative market capitalization for every firm in Russell 3000E as a sum of the market capitalizations of all stocks ranked above the particular firm.
- 4) Russell calculates percentiles for the Russell 3000E Index constituents as the ratio of their cumulative market cap to the total market cap of Russell 3000E.
- 5) Russell calculates the banding range around the 1,000 cutoff point by subtracting (adding) 2.5% from (to) the percentile of the cumulative market cap of the 1,000 cutoff point. To switch from Russell 1000 to Russell 2000 a stock has to fall below not only the 1,000 cutoff point, but also the lower threshold of the aforementioned banding range. Due to stock price fluctuations, the banding range is recomputed annually, leading to different ranks of the lower threshold for every year. In the 2007-2015 period, the ranks of the closest stock to the lower threshold of the banding range ranged between 1,180 and 1,243.
- 6) After constituents of Russell 1000 and Russell 2000 indexes are determined, Russell adjusts the number of security's shares to include only those shares available to the public. This process is referred to as free float adjustment.⁴⁷ The purpose of this adjustment is to exclude from calculations the capitalization that is not available for purchase and is not part of the investable opportunity set. Russell computes the float adjusted market cap of individual stocks as of the end of June. This market cap is used to rank stocks within each index and determine the weights of individual stocks in the index.

⁴⁶ See Russell U.S. Equity Indexes Construction and Methodology, v4.0, August 2019. p. 22-23.

<https://research.ftserussell.com/products/downloads/Russell-US-indexes.pdf>

⁴⁷ For the full list of free float adjustments, see FTSE Russell: Free Float Restrictions, v2.2, March 2020. p. 2-3.

https://research.ftserussell.com/products/downloads/Free_Float_Restrictions.pdf

Appendix OD. Additional analyses

This appendix contains analyses addressing specific concerns about the inferences of the paper. These analyses are not included in the main body of the paper due to space limitations.

OD.1. Engagements of the Big Three with portfolio firms. Placebo test

As a placebo test of Table 3, we repeat the analysis in Table 3 replacing the dependent variables with similar variables defined based on engagements that are *not* related to environmental issues. For State Street, we define *Other_Engagement_StateStreet* as one if State Street engages with the firm about any issue other than Environmental/Social, and zero otherwise. For Vanguard, we define *Other_Engagement_Vanguard* as one if this institution engages with the firm about any issue other than “Oversight of strategy and risk” (which includes environmental issues), and zero otherwise. As shown in Table OD.1, the coefficient on $\text{Log}(CO_2)$ is no longer significant in this alternative test. That is, the level of carbon emissions fails to predict engagement on other issues.

OD.2. Alternative clustering of standard errors

In our main analyses, we cluster standard errors by firm and year. One possible concern is that clustering by year results in a small number of clusters (our sample has a relatively short time series), and thus in potential noise in the estimation of standard errors. To address this concern we check that the t-stats estimated clustering by firm and year do not vary significantly when we bootstrap them. As explained by prior literature (e.g., Cameron, Gelbach, and Miller, 2008; Petersen, 2009) bootstrapping is a common procedure to address the issue of having a small number of clusters. Table OD.2, Panel A, re-estimates the first two specifications in Table 4 using bootstrapped standard errors clustered by firm and year (we cannot conduct the bootstrap analysis in the third specification of Table 4 because the available 2-way-cluster+bootstrap algorithms do not allow the inclusion of firm fixed effects). To further corroborate that our inferences do not hinge on any particular way of estimating standard errors we repeat our tests using different clustering strategies. As shown in Table OD.2, Panel B, our inferences are unaffected.

OD.3. Alternative estimate of the Probability of Big Three Engagement

In Table 8 we measure the influence of each of the Big Three in a given firm by the probability that the institution engages with the firm (for each fund this probability is computed as in Table 3). To ensure that our inferences do not hinge on the specification and estimated parameters of the model of Table 3, we repeat the analysis using a simplified estimate of the probability of being engaged by the Big Three. In particular, we redefine *Big3_Target* as one if the firm is in the top quintile, quartile, and tercile of the distribution (respectively) in terms of both CO_2 emissions and Big Three ownership. As shown in Table OD.3, this alternative measurement choice results in identical inferences.

OD.4. Time variation in Big Three engagement. Robustness tests

To corroborate that our analysis does not hinge on our specific definition of the index measuring the degree of environmental commitment by each of the Big Three, we conduct the following additional robustness check on the tests in Table 9. First, we define continuous variables for the items 1, 4, and 6 (instead of constructing an indicator variable based on whether the values are higher than a given threshold). Second, we take the first principal component of these seven variables. In parallel to the previous analysis, we compute (for each fund) year-by-year changes in this metric and select the year of the maximum increase. These years are the same as in the previous analysis: 2017 for Blackrock, 2014 for State Street, and 2018 for Vanguard. Also, Table OD.4, Panel A, repeats the analysis in Table 9, Panel A, replacing *Blackrock_Commitment*, *StateStreet_Commitment*, and *Vanguard_Commitment* with the corresponding principal component computed as described above.

In Table 9 we measure the influence of each of the Big Three in a given firm by the probability that the institution engages with the firm (for each fund this probability is computed as in Table 3). For robustness, we repeat the analysis distinguishing between firms in the top quintile of both ownership by the corresponding Big Three institution and CO₂ emissions measured at the end of the previous year. We do so because the results in Table 3 suggest that firms with higher Big Three ownership and higher CO₂ emissions are more likely targeted by the Big Three. As shown in Table OD.4, Panel B, this alternative measurement choice results in identical inferences.

OD.5. Exploiting the reconstitution of the Russell 1000/2000. Placebo test

As placebo of the Russell 1000/2000 test, we repeat the analysis in Table 10 replacing *Big3_Hldg* with *NonBig3_Hldg*. To the extent that index investing is more prevalent among the Big Three than among other investment companies, this additional analysis is a placebo test. As shown in Table OD.5, we do not find that *NonBig3_Hldg* is significantly determined by the inclusion in the Russell 1000/2000 indexes. Consistently, in the second stage we do not find any significant association between the fitted value of *NonBig3_Hldg* and carbon emissions (the results are noisy due to the lack of association in the first stage). The outcome of this analysis suggests that the inclusion in the Russell 1000/2000 Indexes is not a generic instrument for institutional ownership, but rather an instrument for index investing, and thus –to the extent that most of the Big Three ownership is passive– a valid instrument for Big Three ownership.

References

Appel, I., Gormley, T., Keim, D., 2016. Passive investors, not passive owners. *Journal of Financial Economics* 121, 111–141.

Bebchuk, L. A., Hirst, S., 2019. Index funds and the future of corporate governance: theory, evidence, and policy. *Columbia Law Review* 113, 2029–2146.

Ben-David, I., Franzoni, F., Moussawi, R., 2019. A note to “do ETFs increase volatility?": An improved method to predict assignment of stocks into Russell indexes. *Journal of Finance (Replications and Corrigenda)* (web-only: <https://afajof.org/comments-and-rejoinders/>)

BlackRock, 2018. How BlackRock investment stewardship engages on climate risk. BlackRock Investment Institute.

BlackRock, 2019. 2019 annual report.

BlackRock, 2020. BlackRock investment stewardship. Protecting our clients assets for the long term. BlackRock Investment Institute.

Bolton, P., Li, T., Ravina, and Rosenthal, H., 2020. Investor ideology. *Journal of Financial Economics* 137, 320–352.

Cameron, A. Gelbach, J., and Miller, D., 2008. Bootstrap-based improvements for inference with clustered errors. *Review of Economics and Statistics* 90, 414–427.

Ertimur Y., F. Ferri and S. Stubben, 2010. Board of Directors' responsiveness to shareholders: Evidence from shareholder proposals. *Journal of Corporate Finance* 16(1), 53–72.

Ertimur Y., F. Ferri and V. Muslu, 2011. Shareholder activism and CEO pay. *Review of Financial Studies* 24(20), 535–592.

Ferri, F., 2012. Low-cost shareholder activism: A review of the evidence, invited chapter for the *Research Handbook on the Economics of Corporate Law*, ed. C.A. Hill and B.H. McDonnell (Edward Elgar Publishing).

Fisch, J., Hamdani, A., Davidoff Solomon, S., 2020. The new titans of Wall Street: A theoretical framework for passive investors. *University of Pennsylvania Law Review* 168, 17–72.

Gillan, S. L., Starks, L. T., 2000. Corporate governance proposals and shareholder activism: The role of institutional investors. *Journal of Financial Economics* 57, 275–305.

Griffin, C., 2020. Margins: Estimating the Influence of the Big Three on Shareholder Proposals. *SMU Law Review*, Forthcoming.

Karpoff, J. M., Malatesta, P. H., Walkling, R. A., 1996. Corporate governance and shareholder initiatives: empirical evidence. *Journal of Financial Economics* 42, 5–50.

Majority Action Report, 2019. “Climate in the boardroom: how asset manager voting shaped corporate climate action in 2019”.

Matos, P., “ESG and responsible institutional investing around the world: A critical review”. CFA Institute Research Foundation, 2020.

McCahery, J. A., Sautner, Z., Starks, L. T., 2016. Behind the scenes: the corporate governance preferences of institutional investors. *Journal of Finance* 71, 2905–2932

Cameron, A. Gelbach, J., and Miller, D., 2008. Bootstrap-based improvements for inference with clustered errors. *Review of Economics and Statistics* 90, 414–427.

Petersen, A., 2009. Estimating Standard Errors in Finance Panel Data Sets: Comparing Approaches. *Review of Financial Studies* 22, 435–480.

Platt, A., 2020. Index fund enforcement. *UC Davis Law Review* 53, 1453–1529.

Schmidt, C., and Fahlenbrach, R., 2017. Do exogenous changes in passive institutional ownership affect corporate governance and firm value? *Journal of Financial Economics* 124, 285–306.

Table OB.1. Disclosures by the Big Three about voting on climate-related shareholder proposals

<p><i>“...not all markets employ shareholder proposals and not all shareholder proposals are drafted to elicit material, decision-useful information for investors. Specifically, of the 207 companies BlackRock engaged with globally on the topic of climate risk in 2019, only 40 companies globally received shareholder proposals related to climate risk, the majority of which were filed in the U.S. and EMEA, and predominantly targeted by the industrial and energy sectors.”</i></p> <p>Source: https://www.blackrock.com/corporate/literature/publication/blk-qtrly-commentary-2019-q2-amrs.pdf</p>
<p><i>“those proposals are often poorly constructed or conflate multiple issues, including ones that a company may not have the ability to act upon, and encourage inconsistent reporting that impedes comparability across different sectors and markets. In our view, given that shareholder proposals represent less than 2% of the ballot items in the U.S., there is disproportionate attention paid to them by commentators, many of whom make a simplistic assessment of an investor’s position on the issue raised by the proposal.”</i></p> <p>Source: https://www.blackrock.com/corporate/literature/publication/blk-qtrly-commentary-2019-q2-amrs.pdf</p>
<p><i>“BlackRock’s approach is to assess the company’s current disclosures and management of the issue that the shareholder proposal raises. Particularly in relation to proposals’ environmental and social (E&S) issues, we seek to understand how the issue might impact the company’s long-term business operations and potential to deliver sustainable financial returns. If we determine that the issue is material and don’t have a clear sense that it is being managed appropriately, we will engage the company to discuss its approach to the issue and how the board and management see the situation evolving over time. The importance of engagement is to explain to the company BlackRock’s views on the issue and provide feedback on the company’s approach from our perspective as a long-term investor on behalf of clients. In the past year, we engaged with over 1,400 individual companies on a wide range of ESG issues. In many cases, we have seen companies improve on ‘E’ and ‘S’, as well as ‘G’ (or governance), issues through engagement(s) over time. In a meaningful number of situations, shareholders who table proposals at companies determine that the company’s approach or planned actions are sufficient to address the issue and withdraw the proposal. Similarly, BlackRock may determine that there is no need to support a shareholder proposal that does go to a vote based on our assessment that management’s approach broadly addresses the issue.”</i></p> <p>Source: https://www.blackrock.com/corporate/literature/publication/blk-qtrly-commentary-2019-q2-amrs.pdf</p>
<p><i>“Blackrock assesses each management and shareholder proposal –through engagement and internal analysis –that comes to a vote. We vote to achieve the outcome that we believe is most aligned with our clients’ long-term economic interests. We have been surprised to see some asset managers have a perfect record of voting in favor of shareholder proposals, even when numerous proposals are not advantageous to shareholders or when the company is making demonstrable progress on an issue.”</i></p> <p>Source: https://www.blackrock.com/corporate/literature/publication/blk-qtrly-commentary-2019-q2-amrs.pdf</p>

Table OD.1. Engagements of the Big Three with portfolio firms. Placebo test

This table presents a placebo test of Table 3 using engagements by State Street and Vanguard that are not on environmental issues. *Other_Engagement_StateStreet* is an indicator variable that equals one if State Street engages with the firm about any issue other than Environmental/Social, and zero otherwise. *Other_Engagement_Vanguard* is an indicator variable that equals one if Vanguard engages with the firm about any issue other than “Oversight of strategy and risk” (which includes environmental issues), and zero otherwise. Engagement data is from year 2018 due to limitations in data availability. The independent variables are measured at the end of the prior year. $\log(CO_2)$ is the logarithm of the firm’s total carbon emissions. *StateStreet_Hldg* (*Vanguard_Hldg*) is State Street’s (Vanguard’s) holding in the firm, namely the fraction of the firm’s equity held by State Street (Vanguard). The rest of the variables are defined in Appendix A. *t*-statistics are in parentheses. *, **, and *** denote significance at the 10%, 5%, and 1% levels (two-tail) respectively. Intercepts are omitted.

	Dependent Variable:					
	<i>Other_Engagement_StateStreet</i>			<i>Other_Engagement_Vanguard</i>		
	<i>Logit</i>	<i>OLS</i>	<i>OLS</i>	<i>Logit</i>	<i>OLS</i>	<i>OLS</i>
	(1)	(2)	(3)	(4)	(5)	(6)
<i>Log(CO₂)</i>	0.002 (0.055)	-0.002 (-0.843)	0.002 (0.373)	-0.110 (-0.875)	-0.001 (-1.368)	-0.000 (-0.047)
<i>StateStreet_Hldg</i>	126.626*** (19.494)	17.117*** (27.640)	11.929*** (13.540)			
<i>Vanguard_Hldg</i>				18.184*** (3.375)	0.156*** (3.362)	-0.122 (-1.330)
<i>MSCI_Constituent</i>	1.473*** (8.185)	0.112*** (8.181)	0.144*** (10.169)	0.079 (0.152)	0.000 (0.088)	0.002 (0.473)
<i>Controls:</i>						
<i>Size</i>	0.153** (2.560)	0.004 (0.856)	0.003 (0.577)	0.359** (2.208)	0.003* (1.944)	0.002 (1.154)
<i>Log(BM)</i>	-0.309*** (-3.664)	-0.024*** (-3.664)	-0.008 (-1.108)	-0.274 (-1.206)	-0.003 (-1.522)	-0.001 (-0.319)
<i>ROA</i>	0.314 (0.294)	-0.014 (-0.210)	0.027 (0.417)	-4.925*** (-2.633)	-0.046** (-2.513)	-0.047** (-2.446)
<i>Leverage</i>	0.627 (1.523)	0.065** (2.079)	0.033 (1.059)	0.514 (0.447)	0.002 (0.194)	0.003 (0.351)
<i>PPE</i>	-0.905*** (-3.298)	-0.073*** (-3.530)	-0.064*** (-2.673)	-1.338 (-1.383)	-0.008 (-1.244)	-0.002 (-0.320)
<i>Country FE</i>	NO	NO	YES	NO	NO	YES
<i>Industry FE</i>	NO	NO	YES	NO	NO	YES
Pseudo R ² /R ²	0.37	0.31	0.35	0.11	0.01	0.03
# Obs.	3,286	3,286	3,286	3,323	3,323	3,323

Table OD.2. Clustering of standard errors. Robustness

This table repeats the tests in Table 4 using alternative options for clustering standard errors. In Panel A, standard errors are bootstrapped using 1,000 iterations. In Panel B, standard errors are double-clustered at country and industry levels (column 1), triple clustered at country, industry and year levels (column 2), and clustered at firm level (column 3). *t*-statistics are in parentheses. *, ** and *** denote significance at the 10%, 5%, and 1% level (two-tail) respectively. Intercepts are omitted.

Panel A. Bootstrapped 2-way cluster standard errors

	Dep. Var.: $\text{Log}(CO_2)$	
	(1)	(2)
<i>Big3_Hldg</i>	-3.44*** (-5.83)	-1.69** (-2.31)
<i>NonBig3_Hldg</i>	-0.04 (-0.25)	-0.12 (-0.77)
<i>Controls</i>	YES	YES
<i>Country FE</i>	YES	YES
<i>Industry FE</i>	YES	YES
<i>Year FE</i>	NO	YES
R ²	0.75	0.75
# Obs.	19,224	19,224

Panel B. Alternative clustering strategies

	Dependent Variable: $\text{Log}(CO_2)$		
	(1)	(2)	(3)
<i>Big3_Hldg</i>	-1.00** (-2.47)	-1.00** (-2.65)	-1.00*** (-2.96)
<i>NonBig3_Hldg</i>	-0.07 (-0.74)	-0.07 (-0.70)	-0.07 (-0.89)
<i>Controls</i>	YES	YES	YES
<i>Year FE</i>	YES	YES	YES
<i>Firm FE</i>	YES	YES	YES
<i>Clustered by</i>	Country and Industry	Country, Industry, and Year	Firm
R ²	0.98	0.98	0.98
# Obs.	19,134	19,134	19,134

Table OD.3. Alternative estimate of the Probability of Big Three Engagement

This table repeats the analysis in Table 8 using an alternative estimate of the probability of being targeted by the Big Three. The dependent variable is the logarithm of CO_2 (i.e., the firm's total GHG emissions measured in equivalents of metric tons of CO_2). $Big3_Hldg$ is the fraction of the firm's equity owned by mutual funds sponsored by BlackRock, Vanguard, or State Street. $NonBig3_Hldg$ is the fraction of the firms' equity owned by funds managed by institutions other than BlackRock, Vanguard, and State Street. $Big3_Target2$ equals one if both $Big3_Hldg$ and CO_2 (measured over the prior year) are in the top X-percentile of their sample distributions, and zero otherwise. In column (1), (2), and (3) X-percentile is, respectively: quintile, quartile, and tercile. The rest of the specification is as in Table 8.

	Dependent Variable: $\text{Log}(CO_2)$		
	<i>Top Quintile</i> (1)	<i>Top Quartile</i> (2)	<i>Top Tercile</i> (3)
<i>Big3_Hldg*Big3_Target2</i>	-1.39*** (-2.59)	-1.52*** (-3.05)	-1.27*** (-2.95)
<i>Big3_Hldg</i>	-0.45 (-1.25)	-0.32 (-0.93)	-0.32 (-0.93)
<i>NonBig3_Hldg</i>	-0.45 (-1.25)	-0.10 (-0.99)	-0.09 (-0.99)
<i>Controls</i>	YES	YES	YES
<i>Year FE</i>	YES	YES	YES
<i>Firm FE</i>	YES	YES	YES
R^2	0.98	0.98	0.98
# Obs.	19,134	19,134	19,134

Table OD.4. Time variation in Big Three engagement. Robustness tests.

This table explores the sensitivity of the results of Table 9 to the way of measuring the key independent variables. In Panel A, *Blackrock_Commitment2*, *StateStreet_Commitment2*, *Vanguard_Commitment2* are measured taking the principal components of the 7 items in Appendix C. The rest of the specification is as in Table 9, Panel A. In Panel B, *Blackrock_Target2*, *StateStreet_Target2*, *Vanguard_Target2* are measured as indicator variables that equal one if both the ownership by the corresponding Big Three institution and CO₂ emissions (measured over the prior year) are in the top quintile of their respective distributions. The rest of the specification is as in Table 9, Panel A.

Panel A. Alternative measure of Big Three commitment

	Dependent Variable: $\text{Log}(CO_2)$		
	(1)	(2)	(3)
<i>Blackrock_Target2*Blackrock_Commitment2</i>	-0.03*** (-4.40)		
<i>StateStreet_Target2*StateStreet_Commitment2</i>		-0.03*** (-4.22)	
<i>Vanguard_Target2*Vanguard_Commitment2</i>			-0.02*** (-4.93)
<i>Controls</i>	YES	YES	YES
<i>Year FE</i>	YES	YES	YES
<i>Firm FE</i>	YES	YES	YES
R ²	0.98	0.98	0.98
# Obs.	19,134	19,134	19,134

Panel B. Alternative measure of the probability of being targeted by the Big Three

	Dependent Variable: $\text{Log}(CO_2)$		
	(1)	(2)	(3)
<i>Blackrock_Target2*Blackrock_Commitment</i>	-0.04*** (-3.92)		
<i>StateStreet_Target2*StateStreet_Commitment</i>		-0.05*** (-5.03)	
<i>Vanguard_Target2*Vanguard_Commitment</i>			-0.04** (-2.04)
<i>Controls</i>	YES	YES	YES
<i>Year FE</i>	YES	YES	YES
<i>Firm FE</i>	YES	YES	YES
R ²	0.98	0.98	0.98
# Obs.	19,134	19,134	19,134

Table OD.5. Exploiting the reconstitution of the Russell 1000/2000. Placebo test.

This table reports estimates from an instrumental variable (IV) 2SLS analysis exploiting the reconstitution of the Russell 1000/2000 indexes. The results correspond to the estimation of the following model:

$$\text{First stage (Panel A): } Non_Big3_Hldg_{it} = \alpha + \beta * Russell2000_{it} + \sum \lambda_n * (\ln(Mktcap_{it}))^n + v * \ln(Float_{it}) + \phi_1 * Band_{it} + \phi_2 * Russell2000_{it-1} + \phi_3 * Band_{it} * Russell2000_{it-1} + \tau_t + \delta_i + \varepsilon_{it} \quad (1)$$

$$\text{Second stage (Panel B): } Log(CO_2)_{it+1} = \alpha + \beta * Non_Big3_Hldg_{it} + \sum \lambda_n * (\ln(Mktcap_{it}))^n + v * \ln(Float_{it}) + \phi_1 * Band_{it} + \phi_2 * Russell2000_{it-1} + \phi_3 * Band_{it} * Russell2000_{it-1} + \tau_t + \delta_i + \varepsilon_{it} \quad (2)$$

$Russell2000_{it}$, the instrument, equals one if stock i is assigned to the Russell 2000 Index in year t , and zero otherwise; $Mktcap_{it}$ is the market capitalization of stock i as of the end of May of year t following Ben-David et al.'s (2019) methodology; $Float_{it}$ is the float-adjusted market capitalization of stock i as of the end of June of year t used by Russell to determine firm-specific index weights. $Band_{it}$ equals one if the firm's end-of-May market capitalization is within the banding interval (see Appendix C), and zero otherwise; $Russell2000_{it-1}$ equals one if the firm is in Russell2000 in the previous year, and zero otherwise. $Non_Big3_Hldg_{it}$ is the fitted value of Non_Big3_Hldg from the first stage estimation. Specifications include polynomial controls of order 1, 2 and 3. Results are based on a sample formed by bandwidths of 500, 400, and 300 firms around the threshold between Russell 1000 and Russell 2000 in the years 2005-2018. Standard errors are clustered at the firm level. t -statistics are reported in parentheses. *, **, and *** indicate statistical significance at the 10%, 5%, and 1% levels, respectively. Intercepts are omitted.

Panel A. First stage

	Dep. Var.: $Non_Big3_Hldg_t$								
	(1)	(2)	(3)	(1)	(2)	(3)	(1)	(2)	(3)
$Russell2000_t$	-0.01 (-1.31)	-0.01 (-0.94)	-0.01 (-1.03)	-0.00 (-0.85)	-0.01 (-0.90)	-0.01 (-1.03)	-0.00 (-0.67)	-0.01 (-0.92)	-0.01 (-1.03)
$Polynomial\ order,\ N$	1	1	1	2	2	2	3	3	3
$Bandwidth$	500	400	300	500	400	300	500	400	300
$Float\ control$	YES	YES	YES	YES	YES	YES	YES	YES	YES
$Firm\ FE$	YES	YES	YES	YES	YES	YES	YES	YES	YES
$Year\ FE$	YES	YES	YES	YES	YES	YES	YES	YES	YES
$Kleibergen\text{-}Paap\ F\text{-}stat.$	1.705	0.880	1.062	0.715	0.817	1.056	0.446	0.838	1.056
R^2	0.90	0.90	0.91	0.90	0.90	0.91	0.90	0.90	0.91
# Obs.	5,164	3,993	2,918	5,164	3,993	2,918	5,164	3,993	2,918

Table OD.5. Exploiting the reconstitution of the Russell 1000/2000. Placebo test (cont'ed)

Panel B. Second stage

	Dep. Var.: $\text{Log}(CO_2)_{t+1}$								
	(1)	(2)	(3)	(1)	(2)	(3)	(1)	(2)	(3)
$\widehat{Non_Big3_Hdlg}_t$	6.57	8.58	5.69	11.89	9.46	5.65	12.91	8.80	5.66
	(1.01)	(0.90)	(1.00)	(0.78)	(0.88)	(0.99)	(0.65)	(0.89)	(0.99)
<i>Polynomial order, N</i>	1	1	1	2	2	2	3	3	3
<i>Bandwidth</i>	500	400	300	500	400	300	500	400	300
<i>Float control</i>	YES	YES	YES	YES	YES	YES	YES	YES	YES
<i>Firm FE</i>	YES	YES	YES	YES	YES	YES	YES	YES	YES
<i>Year FE</i>	YES	YES	YES	YES	YES	YES	YES	YES	YES
R^2	0.93	0.90	0.95	0.84	0.88	0.95	0.81	0.90	0.95
# Obs.	5,164	3,993	2,918	5,164	3,993	2,918	5,164	3,993	2,918